



OR8H2 Antibody

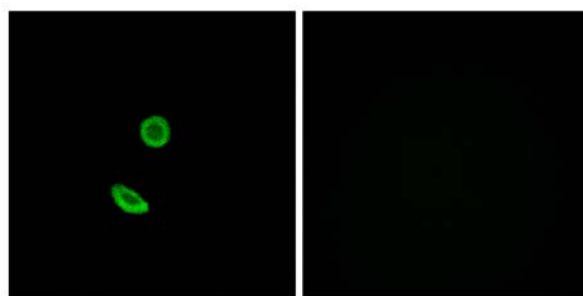
E11-688G**Catalog Number:** E11-688G**Concentration:** 1mg/ml, 100ug/100uL**Swiss-Prot No.:** Q8N162**Other Names:** Olfactory receptor OR11-298**Storage/Stability:** Store at -20°C/1 year**Form of Antibody:** Rabbit IgG in phosphate buffered saline (without Mg²⁺ and Ca²⁺), pH 7.4, 150mM NaCl, 0.02% sodium azide and 50% glycerol.**Immunogen:** The antiserum was produced against synthesized peptide derived from internal of human OR8H2.**Purification:** The antibody was affinity-purified from

rabbit antiserum by affinity-chromatography using epitope-specific immunogen.

Specificity: OR8H2 antibody detects endogenous levels of total OR8H2 protein.**Reactivity:** Human (Identities = 100%, Positives = 100%)**Applications:** IF: 1:100~1:500 ELISA: 1:20000**References:**

Suwa M., Submitted (JUL-2001) to the EMBL/GenBank/DDBJ databases.

Malnic B., Proc. Natl. Acad. Sci. U.S.A. 101:2584-2589(2004).



Peptide

-

+

Immunofluorescence analysis of A549 cells, using OR8H2 antibody.

For Research Use Only