



Abl (Phospho-Tyr393/412) Antibody

E11-7003A

Catalog Number: E11-7003A

Concentration: 1mg/ml

Swiss-Prot No.: P00519/P42684

Other Names: Abelson murine leukemia viral oncogene 1; ABL1; c-ABL; EC 2.7.10.2; JTK7; p150; proto-oncogene tyrosine-protein kinase ABL1; v-abl Abelson murine leukemia viral oncogene 1

All Sites: Human: Tyr393/ Tyr439; Mouse: Tyr393/ Tyr439; Rat: Tyr412/-

Storage/Stability: Store at -20°C/1 year

Form of Antibody: Rabbit IgG in phosphate buffered saline (without Mg^{2+} and Ca^{2+}), pH 7.4, 150mM NaCl, 0.02% sodium azide and 50% glycerol.

Immunogen: The antiserum was produced against synthesized phosphopeptide derived from human Abl around the phosphorylation site of tyrosine 393/412 (D-T-Y^P-T-A).

Purification: The antibody was affinity-purified from rabbit antiserum by affinity-chromatography using epitope-specific phosphopeptide. The antibody against non-phosphopeptide was removed by chromatography using non-phosphopeptide corresponding to the phosphorylation site.

Specificity: Abl (Phospho-Tyr393/412) antibody detects endogenous levels of Abl only when phosphorylated at tyrosine 393/412.

Reactivity: Human, Mouse, Rat

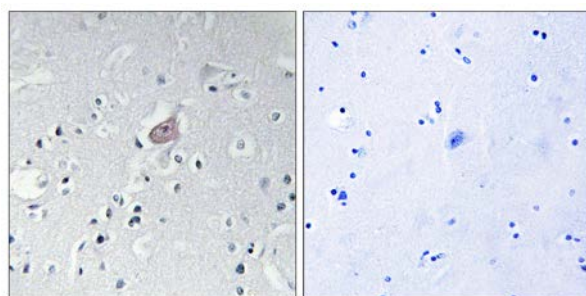
Applications: WB: 1:500~1:1000 IHC: 1:50~1:100 IF: 1:100~1:500 ELISA: 1:10000

References:

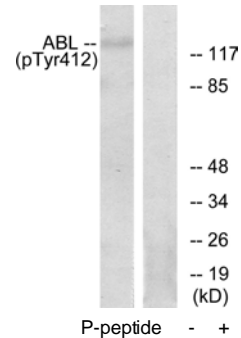
Li G.Y., Submitted (APR-1999) to the EMBL/GenBank/DDBJ databases.

Nagase T., DNA Res. 6:63-70(1999).

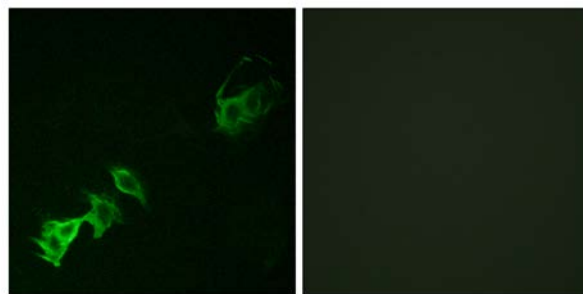
Krapivinsky G., Neuron 43:563-574(2004).



Immunohistochemistry analysis of paraffin-embedded human brain tissue using Abl (Phospho-Tyr393/412) antibody.



Western blot analysis of extracts from RAW264.7 cells, using Abl (Phospho-Tyr393/412) antibody.



Immunofluorescence analysis of A549 cells, using Abl (Phospho-Tyr393/412) antibody.