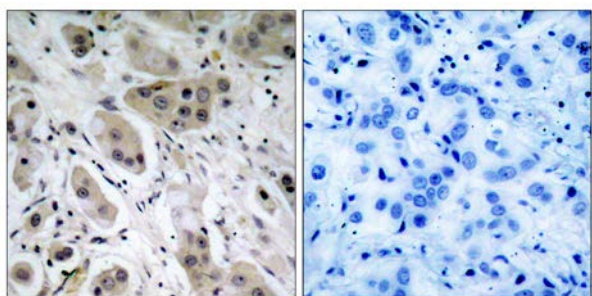




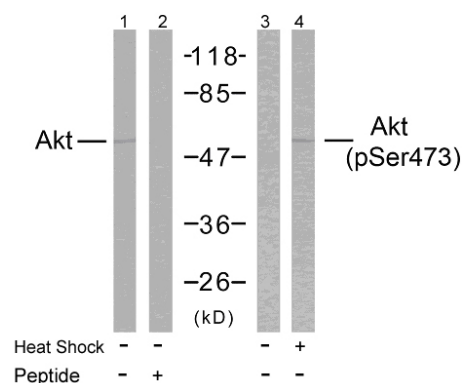
## Akt(Phospho-Ser473) Antibody

E11-7004A

- Catalog Number:** E11-7004A
- Amount:** 100µg/100µl
- Form of Antibody:** Rabbit IgG in phosphate buffered saline (without  $Mg^{2+}$  and  $Ca^{2+}$ ), pH 7.4, 150mM NaCl, 0.02% sodium azide and 50% glycerol.
- Storage/Stability:** Store at -20°C/1 year
- Immunogen:** The antiserum was produced against synthesized phosphopeptide derived from human Akt around the phosphorylation site of Serine473 (Q-F-S<sup>P</sup>-Y-S).
- Purification:** The antibody was affinity-purified from rabbit antiserum by affinity-chromatography using epitope-specific phosphopeptide. The antibody against non-phosphopeptide was removed by chromatography using non-phosphopeptide corresponding to the phosphorylation site.
- Specificity/Sensitivity:** Akt(Phospho-Ser473) Antibody detects endogenous levels of Akt only when phosphorylated at Serine 473.
- Reactivity:** Human, Mouse, Rat
- Applications:** WB: 1:100~1:500      IHC: 1:50~1:100  
ELISA: 1:5000
- Swiss-Prot No. :** P31749
- References:** Baudhuin LM, et al. (2004) FASEB J Feb; 18(2): 341-3.  
Min YH, et al. (2004) Cancer Res; 64(15): 5225-31.  
Feng J, et al. (2004) J Biol Chem; 279(34): 35510-7.



Immunohistochemical analysis of paraffin-embedded breast carcinoma, using Akt (Phospho-Ser473) Antibody. Left: Untreated; Right: Treated with synthesized phosphopeptide.



Western blot analysis of extracts from HeLa cells treated or untreated with heat shock using Akt(Ab-473) Antibody and Akt(Phospho-Ser473) Antibody.

**For Research Use Only**