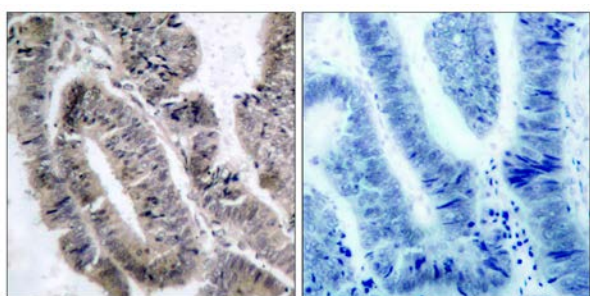




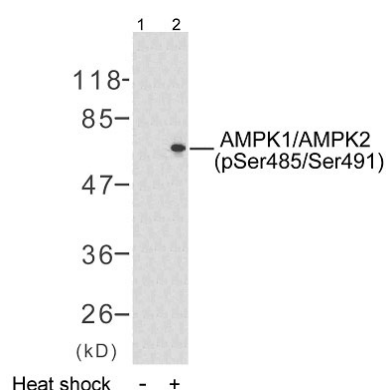
AMPK1/AMPK2 (Phospho-Ser485/Ser491) Antibody

E11-7007A

- Catalog Number:** E11-7007A
- Amount:** 100µg/100µl
- Form of Antibody:** Rabbit IgG in phosphate buffered saline (without Mg^{2+} and Ca^{2+}), pH 7.4, 150mM NaCl, 0.02% sodium azide and 50% glycerol.
- Storage/Stability:** Store at -20°C/1 year
- Immunogen:** The antiserum was produced against synthesized phosphopeptide derived from human AMPK1/AMPK2 around the phosphorylation site of Serine 485/491(S-G-S^P-V-S).
- Purification:** The antibody was affinity-purified from rabbit antiserum by affinity-chromatography using epitope-specific phosphopeptide. The antibody against non-phosphopeptide was removed by chromatography using non-phosphopeptide corresponding to the phosphorylation site.
- Specificity/Sensitivity:** AMPK1/AMPK2 (Phospho-Ser485/Ser491) Antibody detects endogenous levels of AMPK1/AMPK2 only when phosphorylated at Serine 485 or Serine 491.
- Reactivity:** Human, Mouse, Rat
- Applications:** WB: 1:500~1:1000 IHC: 1:50~1:100
ELISA: 1:20000
- Swiss-Prot No. :** Q13131 P54646
- References:** Kim JE, et al. (2005) J Proteome Res. 4(4): 1339-1346.
Woods A, et al. (2003) J Biol Chem. 278(31): 28434-28442.



Immunohistochemical analysis of paraffin-embedded colon carcinoma, using AMPK1/AMPK2 (Phospho-Ser485/Ser491) Antibody. Left: Untreated; Right: Treated with synthesized phosphopeptide.



Western blot analysis using AMPK1/AMPK2 (Phospho-Ser485/Ser491) Antibody. Line1: The extracts from HeLa cells; Line2: The extracts from HeLa cells treated with heat shock.

For Research Use Only