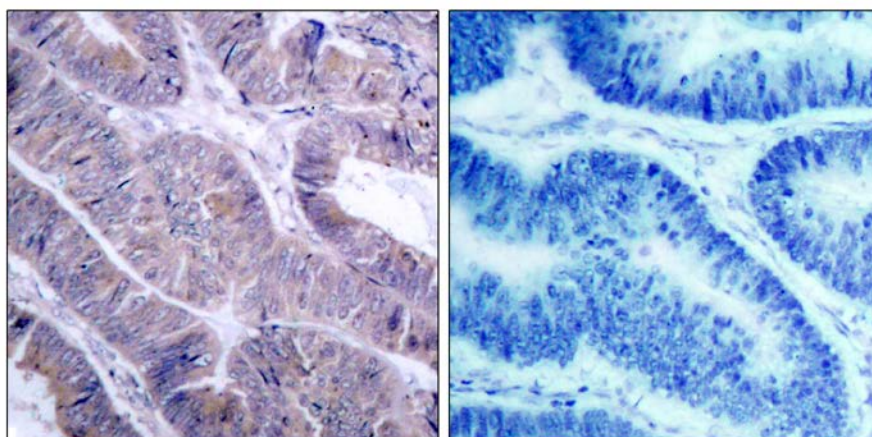




AMPK1/AMPK2(Ab-485/491)Antibody

E11-7007B

- Catalog Number:** E11-7007B
- Amount:** 100µg/100µl
- Form of Antibody:** Rabbit IgG in phosphate buffered saline (without Mg^{2+} and Ca^{2+}), pH 7.4, 150mM NaCl, 0.02% sodium azide and 50% glycerol.
- Storage/Stability:** Store at -20 °C/1 year
- Immunogen:** The antiserum was produced against synthesized non-phosphopeptide derived from human AMPK1/AMPK2 around the phosphorylation site of Serine 485 or Serine 491.
- Purification:** The antibody was affinity-purified from rabbit antiserum by affinity-chromatography using epitope-specific immunogen.
- Specificity/Sensitivity:** AMPK1/AMPK2(Ab-485/491) Antibody detects endogenous levels of total AMPK1/AMPK2 protein.
- Reactivity:** Human, Mouse, Rat
- Applications:** WB: 1:500~1:1000 IHC: 1:50~1:100
ELISA: 1:10000
- Swiss-Prot No. :** Q13131 P54646
- References:** Kim JE, et al. (2005) J Proteome Res. 4(4): 1339-1346.
Woods A, et al. (2003) J Biol Chem. 278(31): 28434-28442.



Immunohistochemical analysis of paraffin-embedded colon carcinoma, using AMPK1/AMPK2(Ab-485/491) Antibody (#2B7007). Left: Untreated; Right: Treated with synthesized peptide.