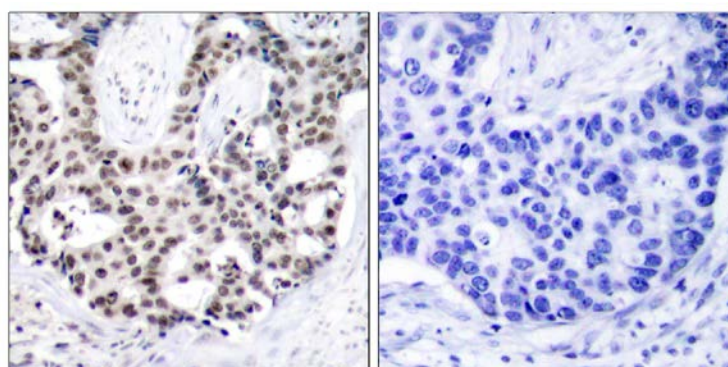




## Androgen Receptor (Phospho-Ser650) Antibody

E11-7009A

**Catalog Number:** E11-7009A**Amount:** 100µg/100µl**Swiss-Prot No. :** P10275**All Names:** ANDR, Androgen receptor, DHTR, Dihydrotestosterone receptor, NR3C4**All Sites:** Human: Ser650; Mouse: Ser650**Form of Antibody:** Rabbit IgG in phosphate buffered saline (without  $Mg^{2+}$  and  $Ca^{2+}$ ), pH 7.4, 150mM NaCl, 0.02% sodium azide and 50% glycerol.**Storage/Stability:** Store at -20°C/1 year**Immunogen:** The antiserum was produced against synthesized phosphopeptide derived from human Androgen Receptor around the phosphorylation site of serine 650 (T-T-S<sup>P</sup>-P-T).**Purification:** The antibody was affinity-purified from rabbit antiserum by affinity-chromatography using epitope-specific phosphopeptide. The antibody against non-phosphopeptide was removed by chromatography using non-phosphopeptide corresponding to the phosphorylation site.**Specificity/Sensitivity:** Androgen Receptor (phospho-Ser650) antibody detects endogenous levels of Androgen Receptor only when phosphorylated at serine 650.**Reactivity:** Human, Mouse**Applications:** IHC: 1:50~1:100      ELISA: 1:20000**References:** Christin E. Petre-Draviam, et al. (2003) Cancer Res. 63: 4903-4913.  
Sydney A. Shain, et al. (1983) Cancer Res. 43: 3691-3695.  
Bekir Cinar, et al. (2005) Cancer Res. 65: 2547-2553.  
Soo-Yeon Park, et al. (2006) Cancer Res. 66: 5121-5129.

P-peptide

-

+

Immunohistochemical analysis of paraffin-embedded human prostate carcinoma tissue using Androgen Receptor (phospho-Ser650) antibody.

**For Research Use Only**