



ASK1 (Phospho-Ser83) Antibody

E11-7010A

Catalog Number: E11-7010A

Amount: 100µg/100µl

Form of Antibody: Rabbit IgG in phosphate buffered saline (without Mg^{2+} and Ca^{2+}), pH 7.4, 150mM NaCl, 0.02% sodium azide and 50% glycerol.

Storage/Stability: Store at -20°C/1 year

Immunogen: The antiserum was produced against synthesized phosphopeptide derived from human ASK1 around the phosphorylation site of serine 83 (G-S-S^P-V-G).

Purification: The antibody was affinity-purified from rabbit antiserum by affinity-chromatography using epitope-specific phosphopeptide. The antibody against non-phosphopeptide was removed by chromatography using non-phosphopeptide corresponding to the phosphorylation site.

Specificity/Sensitivity: ASK1 (phospho-Ser83) antibody detects endogenous levels of ASK1 only when phosphorylated at serine 83.

Reactivity: Human

Applications: WB: 1:500~1:1000 IHC: 1:50~1:100

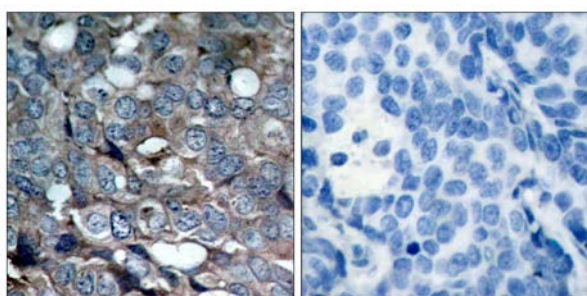
ELISA: 1:20000

Swiss-Prot No. : Q99683

References: Mabuchi S, et al. (2004) Endocrinology. 145(1): 49-58.

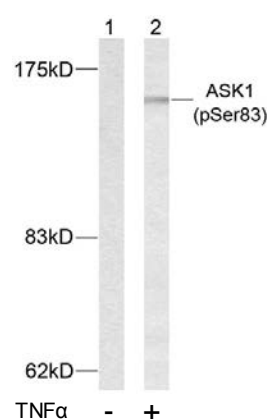
Yuan ZQ, et al. (2003) J Biol Chem. 278(26): 23432-23440.

Kim AH, et al. (2001) Mol Cell Biol. 21(3): 893-901.



P-Peptide - +

Immunohistochemical analysis of paraffin-embedded human breast carcinoma tissue using ASK1 (phospho-Ser83) antibody.



Western blot analysis of extracts from K562 cells using ASK1 (phospho-Ser83) antibody.

For Research Use Only