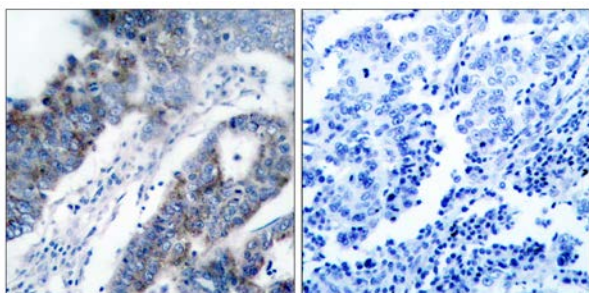




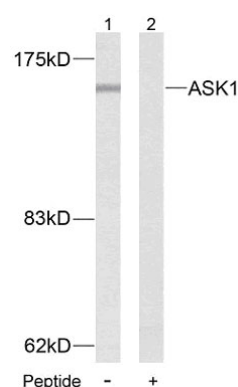
ASK1 (Ab-83) Antibody

E11-7010B

- Catalog Number:** E11-7010B
- Amount:** 100µg/100µl
- Form of Antibody:** Rabbit IgG in phosphate buffered saline (without Mg²⁺ and Ca²⁺), pH 7.4, 150mM NaCl, 0.02% sodium azide and 50% glycerol.
- Storage/Stability:** Store at -20 °C/1 year
- Immunogen:** The antiserum was produced against synthesized non-phosphopeptide derived from human ASK1 around the phosphorylation site of Serine 83.
- Purification:** The antibody was affinity-purified from rabbit antiserum by affinity-chromatography using epitope-specific immunogen.
- Specificity/Sensitivity:** ASK1(Ab-83) Antibody detects endogenous levels of ASK1 protein around Serine 83.
- Reactivity:** Human
- Applications:** WB: 1:500~1:1000 IHC: 1:50~1:100
ELISA: 1:20000
- Swiss-Prot No. :** Q99683
- References:** Mabuchi S, et al. (2004) Endocrinology. 145(1): 49-58.
Yuan ZQ, et al. (2003) J Biol Chem. 278(26): 23432-23440.
Kim AH, et al. (2001) Mol Cell Biol. 21(3): 893-901.



Immunohistochemical analysis of paraffin-embedded breast carcinoma, using ASK1(Ab-83) Antibody (#B7010). Left: Untreated; Right: Treated with synthesized peptide



Western blot analysis of extracts from MDA-MB-435 cells. Line1: Using ASK1(Ab-83) Antibody (#B7010); Line2: The same antibody preincubated with synthesized peptide.

For Research Use Only