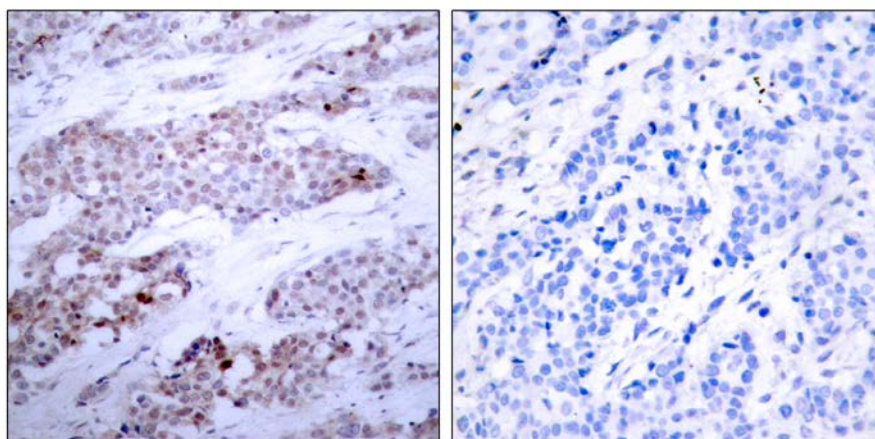




ATF4 (Phospho-Ser245) Antibody

E11-7017A

- Catalog Number:** E11-7017A
- Amount:** 100µg/100µl
- Form of Antibody:** Rabbit IgG in phosphate buffered saline (without Mg^{2+} and Ca^{2+}), pH 7.4, 150mM NaCl, 0.02% sodium azide and 50% glycerol.
- Storage/Stability:** Store at -20°C/1 year
- Immunogen:** The antiserum was produced against synthesized phosphopeptide derived from human ATF4 around the phosphorylation site of Serine 245.
- Purification:** The antibody was affinity-purified from rabbit antiserum by affinity-chromatography using epitope-specific phosphopeptide. The antibody against non-phosphopeptide was removed by chromatography using non-phosphopeptide corresponding to the phosphorylation site.
- Specificity/Sensitivity:** ATF4 (Phospho-Ser245) Antibody detects endogenous levels of ATF4 only when phosphorylated at Serine 245.
- Reactivity:** Human
- Applications:** IHC: 1:50~1:100 ELISA: 1:10000
- Swiss-Prot No. :** P18848
- References:** Yang X, et al. (2004). Cell.117(3): 387-398.



Immunohistochemical analysis of paraffin-embedded breast carcinoma, using ATF4 (Phospho-Ser245) Antibody. Left: Untreated; Right: Treated with synthesized phosphopeptide.

For Research Use Only