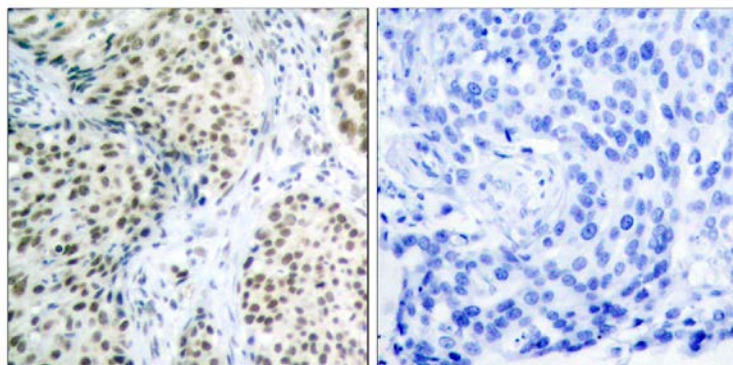




## ATM (Ab-1981) Antibody

E11-7018B

- Catalog Number:** E11-7018B
- Amount:** 100µg/100µl
- Swiss-Prot No. :** Q13315
- All Names:** A-T, mutated, Ataxia telangiectasia mutated, Ataxia telangiectasia mutated homolog, Serine-protein kinase ATM, kinase ATM
- Form of Antibody:** Rabbit IgG in phosphate buffered saline (without  $Mg^{2+}$  and  $Ca^{2+}$ ), pH 7.4, 150mM NaCl, 0.02% sodium azide and 50% glycerol.
- Storage/Stability:** Store at -20°C/1 year
- Immunogen:** The antiserum was produced against synthesized non-phosphopeptide derived from human ATM around the phosphorylation site of serine 1981 (E-G-S<sup>P</sup>-Q-S).
- Purification:** The antibody was affinity-purified from rabbit antiserum by affinity-chromatography using epitope-specific immunogen.
- Specificity/Sensitivity:** ATM (Ab-1981) antibody detects endogenous levels of total ATM protein.
- Reactivity:** Human, Mouse
- Applications:** IHC: 1:50~1:100      ELISA: 1:40000
- References:** Tamara A. Mochan, et al. (2003) Cancer Res. 63: 8586-8591.  
Ian Hickson, et al. (2004) Cancer Res. 64: 9152-9159.  
Alexander J. R. Bishop, et al. (2000) Cancer Res. 60: 395-399.  
Yvonne R. Thorstenson, et al. (2003) Cancer Res. 63: 3325-3333.



Peptide                      -                      +

Immunohistochemical analysis of paraffin-embedded human breast carcinoma tissue using ATM (Ab-1981) antibody (#B7018).

**For Research Use Only**