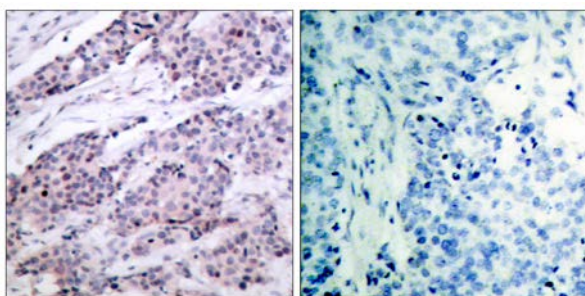




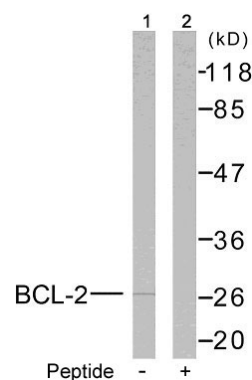
BCL-2(Ab-56) Antibody

E11-7026B

- Catalog Number:** E11-7026B
- Amount:** 100µg/100µl
- Form of Antibody:** Rabbit IgG in phosphate buffered saline (without Mg^{2+} and Ca^{2+}), pH 7.4, 150mM NaCl, 0.02% sodium azide and 50% glycerol.
- Storage/Stability:** Store at -20°C/1 year
- Immunogen:** This antiserum was produced against synthesized non-phosphopeptide derived from human BCL-2 around the phosphorylation site of Threonine 56.
- Purification:** The antibody was affinity-purified from rabbit antiserum by affinity-chromatography using epitope-specific immunogen.
- Specificity/Sensitivity:** BCL-2(Ab-56) Antibody detects endogenous levels of total BCL-2 protein.
- Reactivity:** Human
- Applications:** WB: 1:500~1:1000 IHC: 1:50~1:100
ELISA: 1:10000
- Swiss-Prot No. :** P10415
- References:** Ling, Y. H. et al. (1998) J. Biol. Chem. 273, 18984-18991.
Huang, S.J. and Cidlowski, J.A. (2002) FASEB 16, 825-832.
Deng, X. et al. (2001) J. Biol. Chem. 276, 23681-23688.
Huang ST, et al. (2002) FASEB J Jun; 16(8): 825-32.
Yamamoto, K. et al. (1999) Mol. Cell. Biol. 19, 8469-8478.



Immunohistochemical analysis of paraffin-embedded breast carcinoma, using BCL-2(Ab-56) Antibody(#B7026). Left: Untreated; Right: Treated with synthesized peptide.



Western blot analysis of extracts from MCF7 cells treated with etoposide. Line1: Using BCL-2(Ab-56) Antibody (#B7026); Line2: The same antibody pre-incubated with synthesized peptide.

For Research Use Only