



## BCL-XL (Phospho-Ser62) Antibody

E11-7027A

**Catalog Number:** E11-7027A

**Amount:** 100µg/100µl

**Swiss-Prot No.:** P35222

**All Names:** CATNB, CTNB1, CTNNB1, catenin, beta

**All Sites:** Human: Ser37; Mouse: Ser37; Rat: Ser37

**Form of Antibody:** Rabbit IgG in phosphate buffered saline (without  $Mg^{2+}$  and  $Ca^{2+}$ ), pH 7.4, 150mM NaCl, 0.02% sodium azide and 50% glycerol.

**Storage/Stability:** Store at -20°C/1 year

**Immunogen:** The antiserum was produced against synthesized phosphopeptide derived from human  $\beta$ -Catenin around the phosphorylation site of serine 37 (I-H-S<sup>P</sup>-G-A).

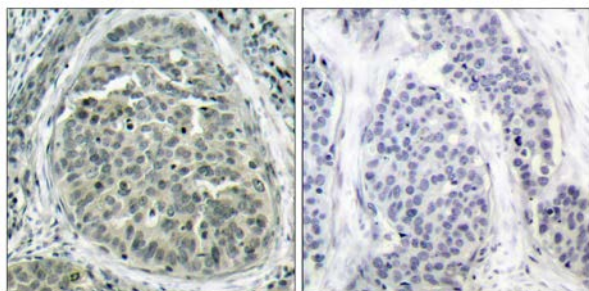
**Purification:** The antibody was affinity-purified from rabbit antiserum by affinity-chromatography using epitope-specific phosphopeptide. The antibody against non-phosphopeptide was removed by chromatography using non-phosphopeptide corresponding to the phosphorylation site.

**Specificity/Sensitivity:**  $\beta$ -Catenin (phospho-Ser37) antibody detects endogenous levels of  $\beta$ -Catenin only when phosphorylated at serine 37.

**Reactivity:** Human, Mouse, Rat

**Applications:** WB: 1:500~1:1000 IHC: 1:50~1:100  
ELISA: 1:40000

**References:** Novak A, et al. (1998) Proc Natl Acad Sci U S A; 95(8): 4374-4379.  
Marin O, et al. (2003) Proc Natl Acad Sci U S A; 100(18): 10193-10200.  
Okamura H, et al. (2004) Mol Cell Biol; 24(10): 4184-4195.  
Xing Y, et al. (2003) Genes Dev; 17(22): 2753-2764.  
Barth AI, et al. (1999) Proc Natl Acad Sci U S A; 96(9): 4947-4952.

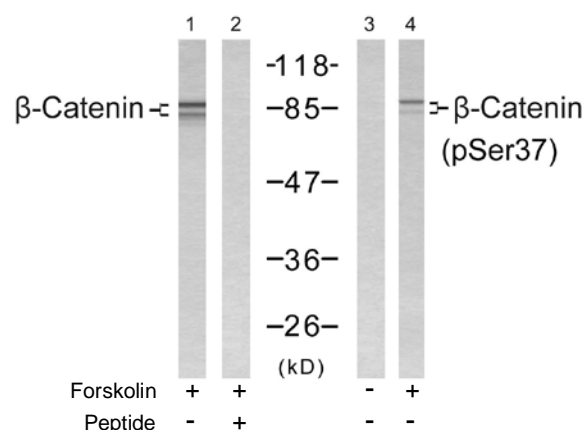


P-Peptide

-

+

Immunohistochemical analysis of paraffin-embedded human breast carcinoma tissue using  $\beta$ -Catenin (phospho-Ser37) antibody.



Western blot analysis of extracts from SW 626 cells, using  $\beta$ -Catenin (Ab-37) antibody (Line 1 and 2) and  $\beta$ -Catenin (phospho-Ser37) antibody (Line 3 and 4).

**For Research Use Only**