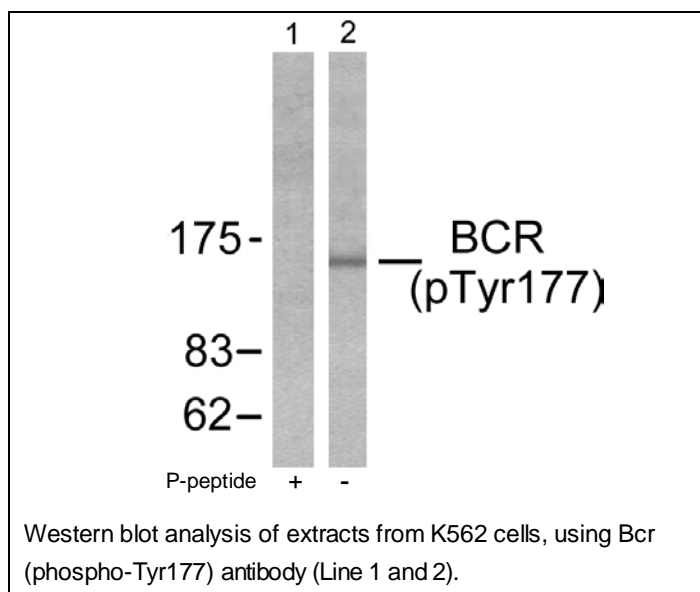




Bcr (Phospho-Tyr177) Antibody

E11-7028A

- Catalog Number:** E11-7028A
- Amount:** 100µg/100µl
- Swiss-Prot No. :** P11274
- All Names:** BCR, BCR protein, BCR1, Breakpoint cluster region protein
- All Sites:** Human: Tyr177; Rat: Tyr72
- Form of Antibody:** Rabbit IgG in phosphate buffered saline (without Mg^{2+} and Ca^{2+}), pH 7.4, 150mM NaCl, 0.02% sodium azide and 50% glycerol.
- Storage/Stability:** Store at -20°C/1 year
- Immunogen:** The antiserum was produced against synthesized phosphopeptide derived from human Bcr around the phosphorylation site of tyrosine177 (P-F-Y^P-V-N).
- Purification:** The antibody was affinity-purified from rabbit antiserum by affinity-chromatography using epitope-specific phosphopeptide. The antibody against non-phosphopeptide was removed by chromatography using non-phosphopeptide corresponding to the phosphorylation site.
- Specificity/Sensitivity:** Bcr (phospho-Tyr177) antibody detects endogenous levels of Bcr only when phosphorylated at tyrosine 177.
- Reactivity:** Human, Rat
- Applications:** WB: 1:500~1:1000 ELISA: 1:10000
- References:** ML Campbell, Cell Growth Differ., Jul 1993; 4: 581.
Asok Mukhopadhyay, J. Biol. Chem., Aug 2002; 277: 30622 - 30628.
Jeanne Wilson-Rawls, Cancer Res., Aug 1996; 56: 3426 - 3430.
Lori Rink, Blood, Apr 2007; 10.1182.



For Research Use Only