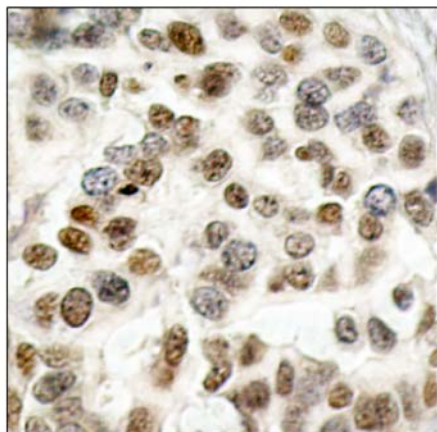




BRCA1 (Ab-1423) Antibody

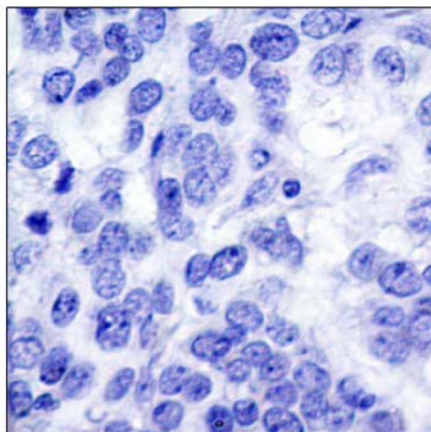
E11-7030B

- Catalog Number:** E11-7030B
- Amount:** 100µg/100µl
- Swiss-Prot No.:** P38398
- All Names:** BRCA1, Breast cancer type 1 susceptibility protein
- Form of Antibody:** Rabbit IgG in phosphate buffered saline (without Mg^{2+} and Ca^{2+}), pH 7.4, 150mM NaCl, 0.02% sodium azide and 50% glycerol.
- Storage/Stability:** Store at -20°C/1 year
- Immunogen:** The antiserum was produced against synthesized non-phosphopeptide derived from human BRCA1 around the phosphorylation site of serine 1423 (H-G-S^P-Q-P).
- Purification:** The antibody was affinity-purified from rabbit antiserum by affinity-chromatography using epitope-specific immunogen.
- Specificity/Sensitivity:** BRCA1 (Ab-1423) antibody detects endogenous levels of total BRCA1 protein.
- Reactivity:** Human
- Applications:** IHC: 1:50~1:100 ELISA: 1:4000
- References:** Kim ST, et al. (2002) Genes Dev; 16(5): 560-570.
Arlt MF, et al. (2004) Mol Cell Biol; 24(15): 6701-6709.
Zhang J, et al. (2004) Mol Cell Biol; 24(2): 708-718.
Greenberg RA, et al. (2006) Genes Dev; 20(1): 34-46.
Tibbetts RS, et al. (2000) Genes Dev; 14(23): 2989-3002.



Peptide

-



+

Immunohistochemical analysis of paraffin-embedded human breast carcinoma tissue using BRCA1 (Ab-1423) antibody (#B7030).

For Research Use Only