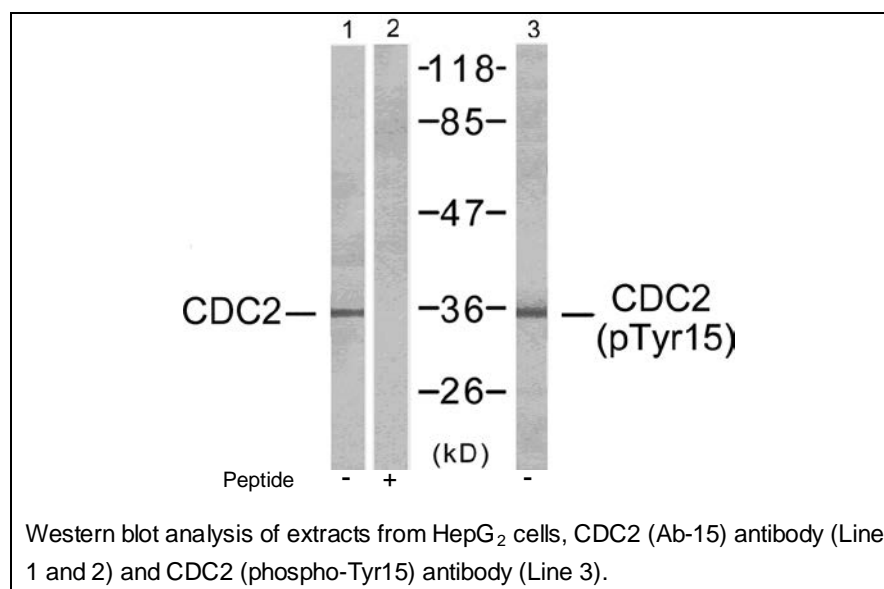




CDC2 (Phospho-Tyr15) Antibody

E11-7036A

- Catalog Number:** E11-7036A
- Amount:** 100µg/100µl
- Swiss-Prot No. :** P06493
- All Names:** p34 protein kinase; Cyclin-dependent kinase 1; CDK1
- All Sites:** Human: Tyr15; Mouse: Tyr15; Rat: Tyr15
- Form of Antibody:** Rabbit IgG in phosphate buffered saline (without Mg^{2+} and Ca^{2+}), pH 7.4, 150mM NaCl, 0.02% sodium azide and 50% glycerol.
- Storage/Stability:** Store at -20°C/1 year
- Immunogen:** The antiserum was produced against synthesized phosphopeptide derived from human CDC2 around the phosphorylation site of tyrosine 15 (G-T-Y^P-G-V).
- Purification:** The antibody was affinity-purified from rabbit antiserum by affinity-chromatography using epitope-specific phosphopeptide. The antibody against non-phosphopeptide was removed by chromatography using non-phosphopeptide corresponding to the phosphorylation site.
- Specificity/Sensitivity:** CDC2 (Phospho-Tyr15) antibody detects endogenous levels of CDC2 only when phosphorylated at tyrosine 15.
- Reactivity:** Human, Mouse, Rat
- Applications:** WB: 1:500~1:1000 ELISA: 1:10000
- References:** Jeremy P. H. Chow, et al. (2003) J. Biol. Chem; 278: 40815-40828.
NJ Wells, et al. (1999) J. Cell Sci; 112: 3361.
P Jin, et al. (1996) J. Cell Biol; 134: 963.
KM Pickham and DJ Donoghue (1994) Mol. Biol. Cell; 5: 587.



For Research Use Only