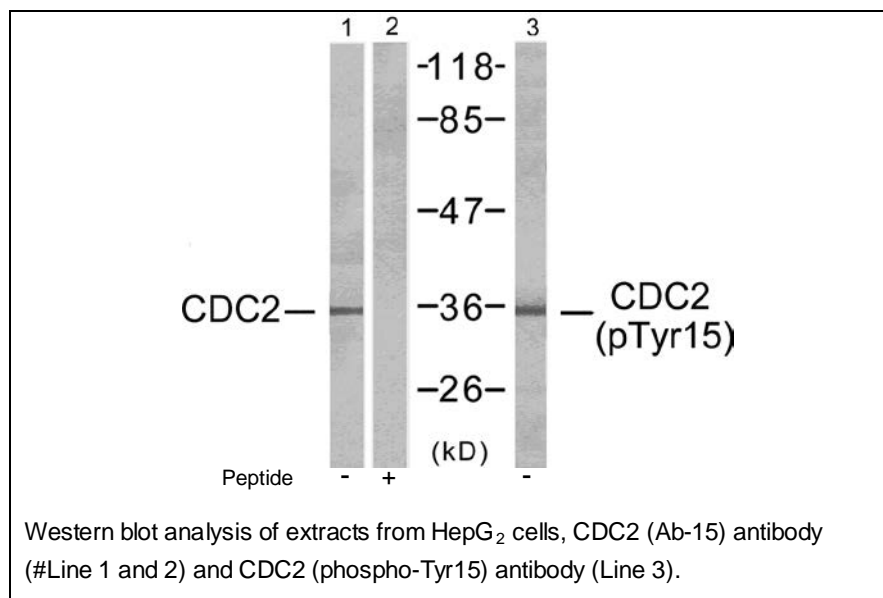




## CDC2 (Ab-15) Antibody

E11-7036B

- Catalog Number:** E11-7036B
- Amount:** 100µg/100µl
- Swiss-Prot No. :** P06493
- All Names:** p34 protein kinase; Cyclin-dependent kinase 1; CDK1
- Form of Antibody:** Rabbit IgG in phosphate buffered saline (without  $Mg^{2+}$  and  $Ca^{2+}$ ), pH 7.4, 150mM NaCl, 0.02% sodium azide and 50% glycerol.
- Storage/Stability:** Store at -20°C/1 year
- Immunogen:** The antiserum was produced against synthesized phosphopeptide derived from human CDC2 around the phosphorylation site of tyrosine 15 (G-T-Y<sup>P</sup>-G-V).
- Purification:** The antibody was affinity-purified from rabbit antiserum by affinity-chromatography using epitope-specific immunogen.
- Specificity/Sensitivity** CDC2 (Ab-15) antibody detects endogenous levels of total CDC2 protein.
- Reactivity:** Human, Mouse, Rat
- Applications:** WB: 1:500~1:1000      ELISA: 1:10000
- References:** Jeremy P. H. Chow, et al. (2003) J. Biol. Chem; 278: 40815-40828.  
NJ Wells, et al. (1999) J. Cell Sci; 112: 3361.  
P Jin, et al. (1996) J. Cell Biol; 134: 963.  
KM Pickham and DJ Donoghue (1994) Mol. Biol. Cell; 5: 587.



**For Research Use Only**