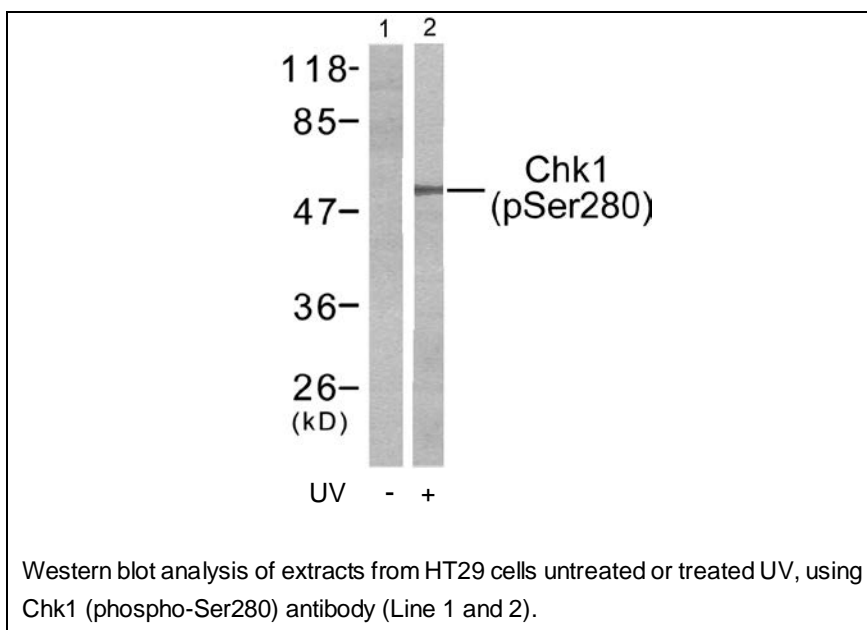




## Chk1 (Phospho-Ser280) Antibody

E11-7040A

- Catalog Number:** E11-7040A
- Amount:** 100µg/100µl
- Swiss-Prot No. :** O14757
- All Names:** CHEK1, Chk1, kinase Chk1
- All Sites:** Human: Ser280; Mouse: Ser280; Rat: Ser280
- Form of Antibody:** Rabbit IgG in phosphate buffered saline (without  $Mg^{2+}$  and  $Ca^{2+}$ ), pH 7.4, 150mM NaCl, 0.02% sodium azide and 50% glycerol.
- Storage/Stability:** Store at -20°C/1 year
- Immunogen:** The antiserum was produced against synthesized phosphopeptide derived from human Chk1 around the phosphorylation site of serine 280 (V-T-S<sup>P</sup>-G-G).
- Purification:** The antibody was affinity-purified from rabbit antiserum by affinity-chromatography using epitope-specific phosphopeptide. The antibody against non-phosphopeptide was removed by chromatography using non-phosphopeptide corresponding to the phosphorylation site.
- Specificity/Sensitivity:** Chk1 (phospho-Ser280) antibody detects endogenous levels of Chk1 only when phosphorylated at serine 280.
- Reactivity:** Human, Mouse, Rat
- Applications:** WB: 1:500~1:1000      ELISA: 1:20000
- References:** Puc et al. (2005) J Cancer Cell, 7, 2.  
Yuchi Hirose, et al. (2005) Cancer Research 65, 4861-4869, June 1.  
Vincent O'Brien, et al. (2006) Carcinogenesis 27(4):682-692.



**For Research Use Only**