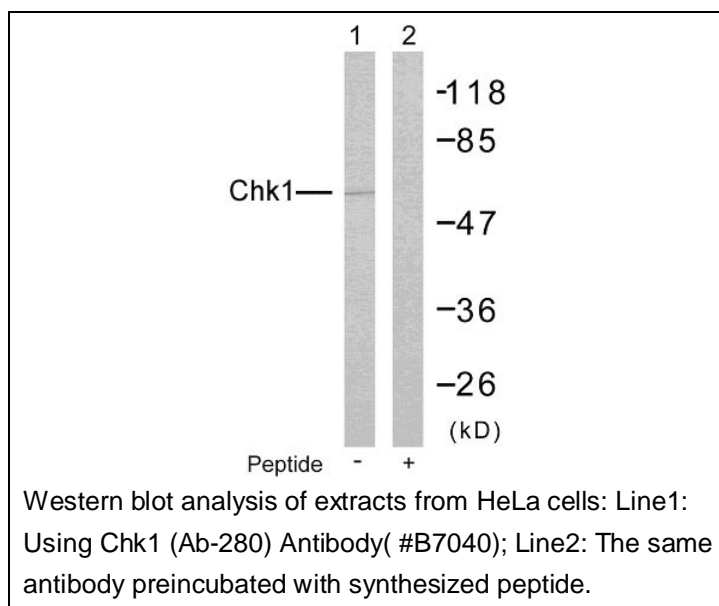




## Chk1 (Ab-280) Antibody

E11-7040B

- Catalog Number:** E11-7040B
- Amount:** 100µg/100µl
- Form of Antibody:** Rabbit IgG in phosphate buffered saline (without  $Mg^{2+}$  and  $Ca^{2+}$ ), pH 7.4, 150mM NaCl, 0.02% sodium azide and 50% glycerol.
- Storage/Stability:** Store at -20°C/1 year
- Immunogen:** This antiserum was produced against synthesized non-phosphopeptide derived from human Chk1 around the phosphorylation site of Serine 280.
- Purification:** The antibody was affinity-purified from rabbit antiserum by affinity-chromatography using epitope-specific immunogen.
- Specificity/Sensitivity:** Chk1 (Ab-280) Antibody detects endogenous levels of total Chk1 protein.
- Reactivity:** Human
- Applications:** WB: 1:500~1:1000      ELISA: 1:10000
- Swiss-Prot No. :** O14757
- References:** Conn CW, et al. (2004)Dev Cell; 7(2): 275-81.  
King FW, et al. (2004)Cell Cycle; 3(5): 634-7.  
Shtivelman E, et al. (2002) Curr Biol; 12(11): 919-24.



**For Research Use Only**