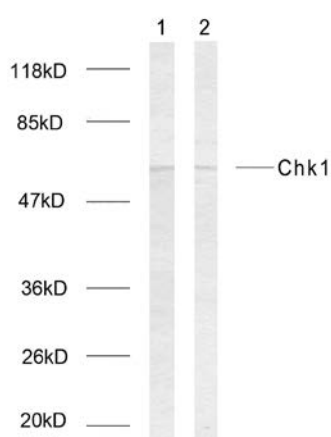




## Chk1 (Ab-317) Antibody

**E11-7041A**

- Catalog Number:** E11-7041A
- Amount:** 100µg/100µl
- Form of Antibody:** Rabbit IgG in phosphate buffered saline (without  $Mg^{2+}$  and  $Ca^{2+}$ ), pH 7.4, 150mM NaCl, 0.02% sodium azide and 50% glycerol.
- Storage/Stability:** Store at -20°C/1 year
- Immunogen:** The antiserum was produced against synthesized phosphopeptide derived from human Chk1 around the phosphorylation site of Serine 317.
- Purification:** The antibody was affinity-purified from rabbit antiserum by affinity-chromatography using epitope-specific phosphopeptide. The antibody against non-phosphopeptide was removed by chromatography using non-phosphopeptide corresponding to the phosphorylation site.
- Specificity/Sensitivity:** Chk1 (Phospho-Ser317) Antibody detects endogenous levels of Chk1 only when phosphorylated at Serine 317.
- Reactivity:** Human, Rat
- Applications:** WB: 1:500~1:1000      ELISA: 1:5000
- Swiss-Prot No. :** O14757
- References:** Zhang YW, et al. (2005) Mol Cell; 19(5): 607-18.  
Bhoumik A, et al. (2005) Mol Cell; 18(5): 577-87.  
Rocha S, et al. (2005) EMBO J.  
Clarke CA, et al. (2005) Biochem J.  
Yu X, et al. (2004) Mol Cell Biol; 24(21): 9478-86.



**For Research Use Only**