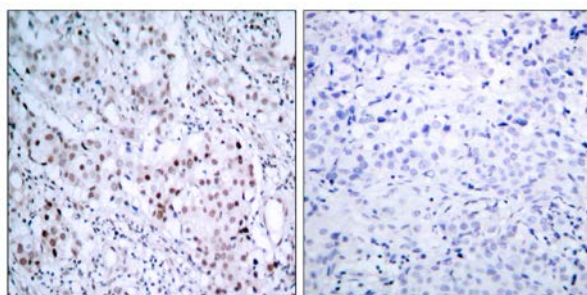




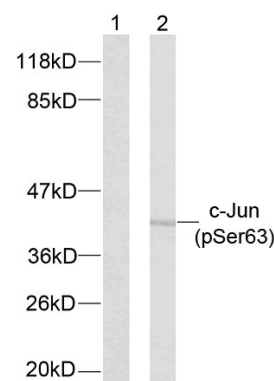
c-Jun (Phospho-Ser63) Antibody

E11-7045A

- Catalog Number:** E11-7045A
- Amount:** 100µg/100µl
- Form of Antibody:** Rabbit IgG in phosphate buffered saline (without Mg^{2+} and Ca^{2+}), pH 7.4, 150mM NaCl, 0.02% sodium azide and 50% glycerol.
- Storage/Stability:** Store at -20°C/1 year
- Immunogen:** The antiserum was produced against synthesized phosphopeptide derived from human c-Jun around the phosphorylation site of Serine 63.
- Purification:** The antibody was affinity-purified from rabbit antiserum by affinity-chromatography using epitope-specific phosphopeptide. The antibody against non-phosphopeptide was removed by chromatography using non-phosphopeptide corresponding to the phosphorylation site.
- Specificity/Sensitivity:** c-Jun (Phospho-Ser63) Antibody detects endogenous levels of c-Jun only when phosphorylated at Serine 63.
- Reactivity:** Human, Mouse, Rat
- Applications:** WB: 1:500~1:1000 IHC: 1:50~1:100
ELISA: 1:20000
- Swiss-Prot No. :** P05412
- References:** Wei W, et al. (2005). Cancer Cell. 8(1): 25-33.
Sevilla A, et al. (2004). Oncogene.23(55): 8950-8958.
Li L, et al. (2004). J Biol Chem.279(6): 4058-4065.
Hurd C, et al. (2002). Oncogene.21(14): 2154-2160.



Immunohistochemical analysis of paraffin-embedded breast carcinoma, using c-Jun (Phospho-Ser63) Antibody. Left: Untreated; Right: Treated with synthesized phosphopeptide.



Western blot analysis of extracts using c-Jun (Phospho-Ser63) Antibody. Line1: The extracts from NIH/3T3 cells untreated; Line2: The extracts from NIH/3T3 cells treated with UV.

For Research Use Only