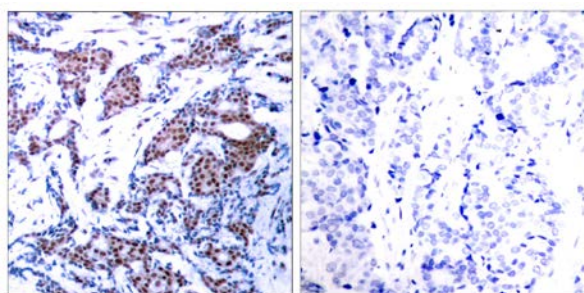




## c-Jun (Phospho-Ser73) Antibody

E11-7046A

- Catalog Number:** E11-7046A
- Amount:** 100µg/100µl
- Form of Antibody:** Rabbit IgG in phosphate buffered saline (without  $Mg^{2+}$  and  $Ca^{2+}$ ), pH 7.4, 150mM NaCl, 0.02% sodium azide and 50% glycerol.
- Storage/Stability:** Store at -20°C/1 year
- Immunogen:** The antiserum was produced against synthesized phosphopeptide derived from human c-Jun around the phosphorylation site of serine 73 (L-A-S<sup>P</sup>-P-E).
- Purification:** The antibody was affinity-purified from rabbit antiserum by affinity-chromatography using epitope-specific phosphopeptide. The antibody against non-phosphopeptide was removed by chromatography using non-phosphopeptide corresponding to the phosphorylation site.
- Specificity/Sensitivity:** c-Jun (phospho-Ser73) antibody detects endogenous levels of c-Jun only when phosphorylated at serine 73.
- Reactivity:** Human, Mouse, Rat
- Applications:** WB: 1:500~1:1000      IHC: 1:50~1:100  
ELISA: 1:10000
- Swiss-Prot No. :** P05412
- References:** Sevilla A, et al. (2004) *Oncogene*.23 (55): 8950-8958.  
Beausoleil S A, et al. (2004) *Proc Natl Acad Sci U S A*. 101(33): 12130-12135.  
Binetruy B, et al. (1991) *Nature*. 351:122-127.  
Smeal T, et al. (1991) *Nature*. 354: 494-496.  
Derijard B, et al. (1994) *Cell*. 76:1025-1037.

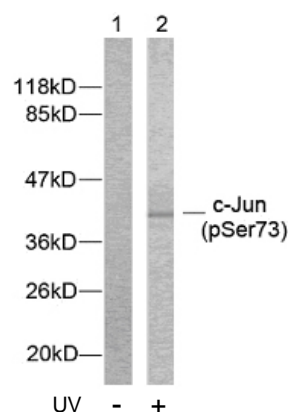


P-Peptide

-

+

Immunohistochemical analysis of paraffin-embedded human breast carcinoma tissue using c-Jun (phospho-Ser73) antibody.



Western blot analysis of extracts from HeLa cells treated with UV, using c-Jun (phospho-Ser73) antibody.

**For Research Use Only**