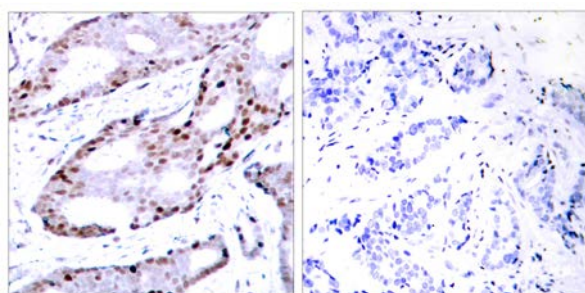




c-Jun (Ab-73) Antibody

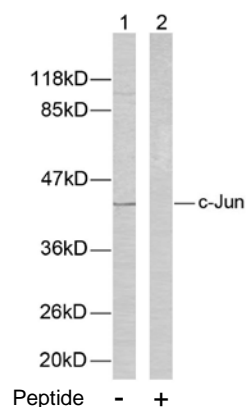
E11-7046B

- Catalog Number:** E11-7046B
- Amount:** 100µg/100µl
- Form of Antibody:** Rabbit IgG in phosphate buffered saline (without Mg²⁺ and Ca²⁺), pH 7.4, 150mM NaCl, 0.02% sodium azide and 50% glycerol.
- Storage/Stability:** Store at -20°C/1 year
- Immunogen:** This antiserum was produced against synthesized non-phosphopeptide derived from human c-Jun around the phosphorylation site of serine 73.
- Purification:** The antibody was affinity-purified from rabbit antiserum by affinity-chromatography using epitope-specific immunogen.
- Specificity/Sensitivity:** c-Jun (Ab-73) antibody detects endogenous levels of total c-Jun protein.
- Reactivity:** Human, Mouse, Rat
- Applications:** WB: 1:500~1:1000 IHC: 1:50~1:100
ELISA: 1:10000
- Swiss-Prot No. :** P05412
- References:** Sevilla A, et al. (2004) *Oncogene*.23 (55): 8950-8958.
Beausoleil S A, et al. (2004) *Proc Natl Acad Sci U S A*. 101(33): 12130-12135.
Binetruy B, et al. (1991) *Nature*. 351:122-127.
Smeal T, et al. (1991) *Nature*. 354: 494-496.
Derijard B, et al. (1994) *Cell*. 76:1025-1037.



Peptide - +

Immunohistochemical analysis of paraffin-embedded human breast carcinoma tissue using c-Jun (Ab-73) antibody (#B7046).



Western blot analysis of extracts from HeLa cells using c-Jun (Ab-73) antibody (#B7046).

For Research Use Only