



CREB (Phospho-Ser129) Antibody

E11-7052A

Catalog Number: E11-7052A

Amount: 100µg/100µl

Swiss-Prot No. : P16220

All Names: CREB1, cAMP response element-binding protein

All Sites: Human: Ser129; Mouse: Ser129; Rat: Ser129

Form of Antibody: Rabbit IgG in phosphate buffered saline (without Mg^{2+} and Ca^{2+}), pH 7.4, 150mM NaCl, 0.02% sodium azide and 50% glycerol.

Storage/Stability: Store at -20°C/1 year

Immunogen: The antiserum was produced against synthesized phosphopeptide derived from human CREB around the phosphorylation site of serine 129 (I-L-S^P-R-R) (CKRREIL^SRRPSYR).

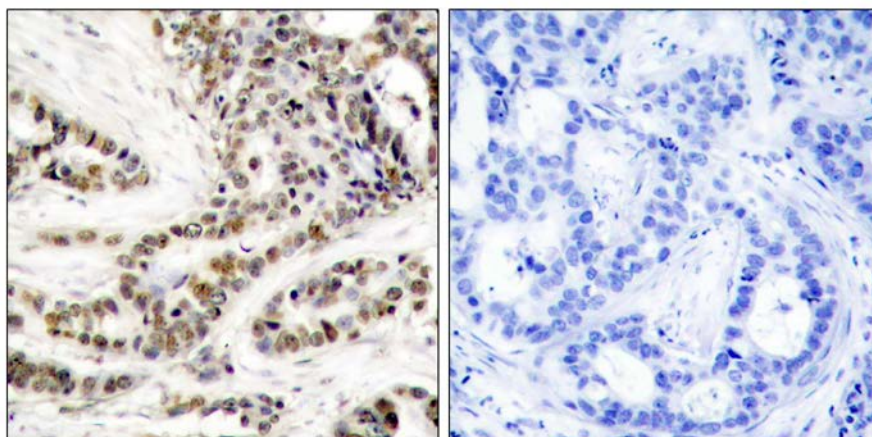
Purification: The antibody was affinity-purified from rabbit antiserum by affinity-chromatography using epitope-specific phosphopeptide. The antibody against non-phosphopeptide was removed by chromatography using non-phosphopeptide corresponding to the phosphorylation site.

Specificity/Sensitivity: CREB (phospho-Ser129) antibody detects endogenous levels of CREB only when phosphorylated at serine 129.

Reactivity: Human, Mouse, Rat

Applications: IHC: 1:50~1:100 ELISA: 1:40000

References: Chrystelle V. Garat, et al. (2006) Mol. Cell. Biol; 26: 4934-4948.
Lilah Rothem, et al. (2004) Mol. Pharmacol; 66: 1536-1543.
Darren R. Tyson, et.al. (2002) Endocrinology; 143: 674.
Kyung-Woo Park, et al. (2003) Arterioscler. Thromb. Vasc. Biol; 23: 1364.



P-Peptide

-

+

Immunohistochemical analysis of paraffin-embedded human breast carcinoma tissue using CREB (phospho-Ser129) antibody.

For Research Use Only