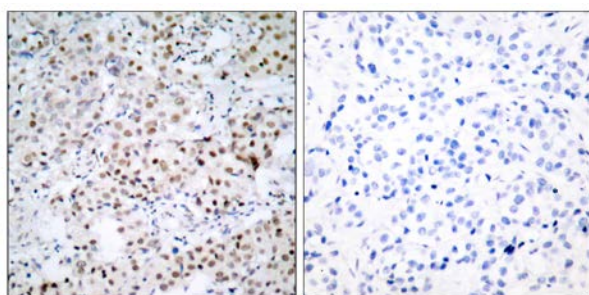




## CREB (Phospho-Ser133) Antibody

E11-7053A

- Catalog Number:** E11-7053A
- Amount:** 100µg/100µl
- Form of Antibody:** Rabbit IgG in phosphate buffered saline (without  $Mg^{2+}$  and  $Ca^{2+}$ ), pH 7.4, 150mM NaCl, 0.02% sodium azide and 50% glycerol.
- Storage/Stability:** Store at -20°C/1 year
- Immunogen:** The antiserum was produced against synthesized phosphopeptide derived from human CREB around the phosphorylation site of serine 133 (R-P-S<sup>P</sup>-Y-R) (CILSRRP**S**YRKILN).
- Purification:** The antibody was affinity-purified from rabbit antiserum by affinity-chromatography using epitope-specific phosphopeptide. The antibody against non-phosphopeptide was removed by chromatography using non-phosphopeptide corresponding to the phosphorylation site.
- Specificity/Sensitivity:** CREB (phospho-Ser133) antibody detects endogenous levels of CREB only when phosphorylated at serine 133.
- Reactivity:** Human, Mouse, Rat
- Applications:** WB: 1:500~1:1000 IHC: 1:50~1:100 ELISA: 1:10000 IP: Various Dilution
- Swiss-Prot No. :** P16220
- References:** Xing J, et al. (1998) Mol Cell Biol 18(4): 1946-55.  
 Tan Y, et al. (1996) EMBO J; 15(17): 4629-42.  
 Hao, M. et al. (1996) J. Biol. Chem. 271, 29380-29385.  
 Mayo LD, et al. (2001) Biol Chem; 276(27): 25184-9.

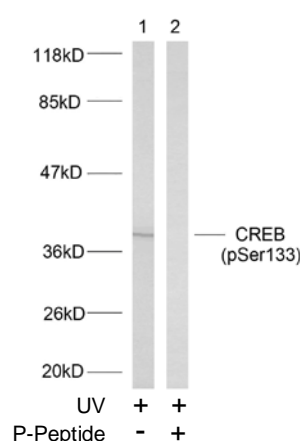


P-Peptide

-

+

Immunohistochemical analysis of paraffin-embedded human breast carcinoma tissue using CREB (phospho-Ser133) antibody.



Western blot analysis of extracts from HeLa cells treated with UV, using CREB (phospho-Ser133) antibody.

**For Research Use Only**