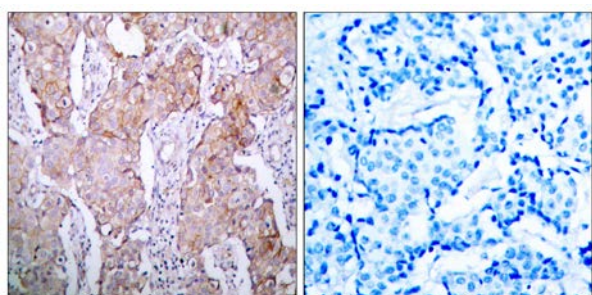




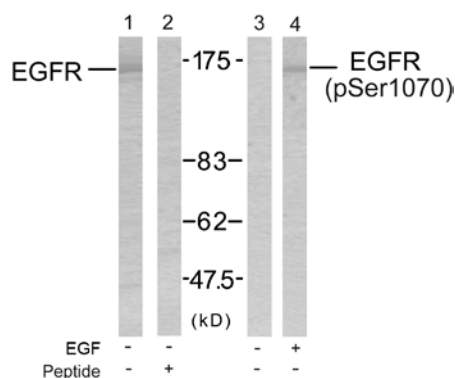
EGFR (Phospho-Ser1070) Antibody

E11-7060A

- Catalog Number:** E11-7060A
- Amount:** 100µg/100µl,
- Form of Antibody:** Rabbit IgG in phosphate buffered saline (without Mg^{2+} and Ca^{2+}), pH 7.4, 150mM NaCl, 0.02% sodium azide and 50% glycerol.
- Storage/Stability:** Store at -20°C/1 year
- Immunogen:** The antiserum was produced against synthesized phosphopeptide derived from human EGFR around the phosphorylation site of Serine 1070 (R-Y-S^P-S-D).
- Purification:** The antibody was affinity-purified from rabbit antiserum by affinity-chromatography using epitope-specific phosphopeptide. The antibody against non-phosphopeptide was removed by chromatography using non-phosphopeptide corresponding to the phosphorylation site.
- Specificity/Sensitivity:** EGFR(Phospho-Ser1070) Antibody detects endogenous levels of EGFR only when phosphorylated at Serine1070.
- Reactivity:** Human, Mouse, Rat
- Applications:** WB: 1:500~1:1000 IHC: 1:50~1:100
ELISA: 1:20000 IP: Various Dilution
- Swiss-Prot No. :** P00533
- References:** Feinmesser RL, et al. (1999) J Biol Chem; 274(23): 16168-73.
Gamou S, et al. (1995) FEBS Lett; 357(2): 161-4.
Gamou S, et al. (1994) J Cell Physiol; 158(1): 151-9.
Heisermann GJ, et al. (1988) J Biol Chem; 263(26): 13152-8.



Immunohistochemical analysis of paraffin-embedded breast carcinoma, using EGFR (Phospho-Ser1070) Antibody. Left: Untreated; Right: Treated with synthesized phosphopeptide.



Western blot analysis of the extracts from SK-OV3 cells untreated or treated with EGF using EGFR(Ab-1070) Antibody and EGFR(Phospho-Ser1070) Antibody.

For Research Use Only