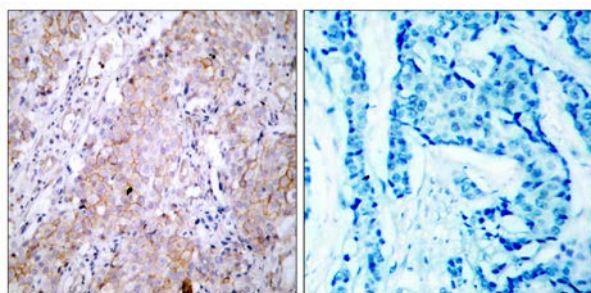




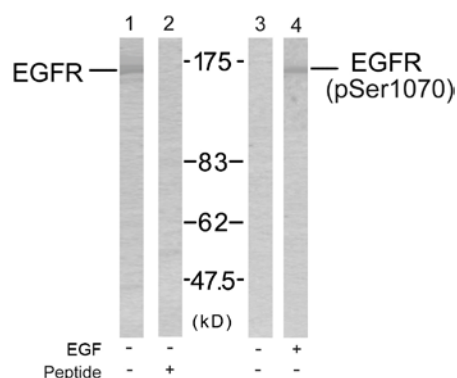
## EGFR (Ab-1070) Antibody

E11-7060B

- Catalog Number:** E11-7060B
- Amount:** 100µg/100µl
- Form of Antibody:** Rabbit IgG in phosphate buffered saline (without  $Mg^{2+}$  and  $Ca^{2+}$ ), pH 7.4, 150mM NaCl, 0.02% sodium azide and 50% glycerol.
- Storage/Stability:** Store at -20°C/1 year
- Immunogen:** The antiserum was produced against synthesized non-phosphopeptide derived from human EGFR around the phosphorylation site of Serine1070.
- Purification:** The antibody was affinity-purified from rabbit antiserum by affinity-chromatography using epitope-specific immunogen.
- Specificity/Sensitivity:** EGFR (Ab-1070) Antibody detects endogenous levels of total EGFR protein.
- Reactivity:** Human, Mouse, Rat
- Applications:** WB: 1:500~1:1000      IHC: 1:50~1:100  
ELISA: 1:20000
- Swiss-Prot No. :** P00533
- References:** Feinmesser RL, et al. (1999) J Biol Chem; 274(23): 16168-73.  
Gamou S, et al. (1995) FEBS Lett; 357(2): 161-4.  
Gamou S, et al. (1994) J Cell Physiol; 158(1): 151-9.  
Heisermann GJ, et al. (1988) J Biol Chem; 263(26): 13152-8.



Immunohistochemical analysis of paraffin-embedded breast carcinoma, using EGFR (Ab-1070) Antibody (#B7060). Left: Untreated; Right: Treated with synthesized peptide.



Western blot analysis of the extracts from SK-OV3 cells untreated or treated with EGF using EGFR(Ab-1070) Antibody (#B7060) and EGFR(Phospho-Ser1070) Antibody (#11105): Line1: Using #B7060; Line2: Using #B7060 preincubated with synthesized peptide.

**For Research Use Only**