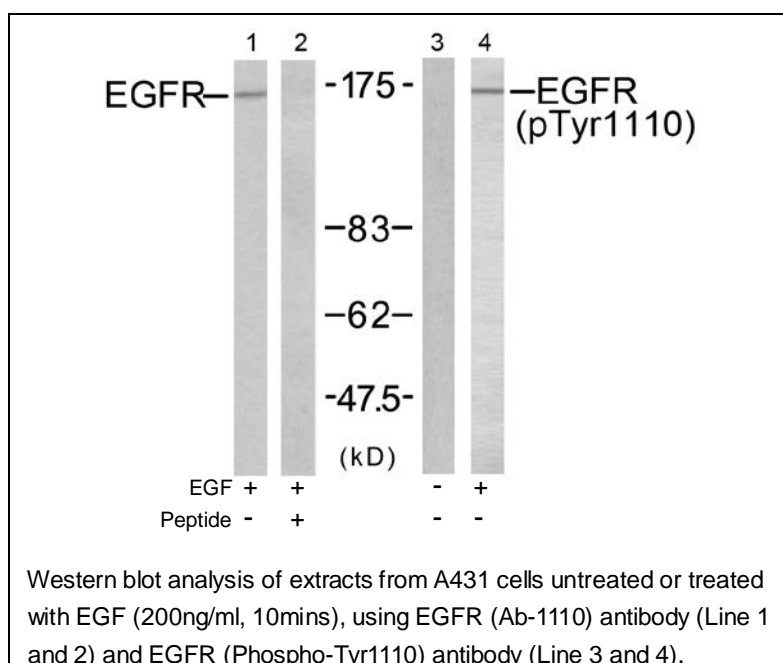




EGFR (Phospho-Tyr1110) Antibody

E11-7062A

Catalog Number:	E11-7062A
Amount:	100µg/100µl,
Swiss-Prot No. :	P00533
All Names:	ERBB1, Epidermal growth factor receptor [Precursor]
All Sites:	Human: Tyr1110; Mouse: Tyr1110; Rat: Tyr1109
Form of Antibody:	Rabbit IgG in phosphate buffered saline (without Mg ²⁺ and Ca ²⁺), pH 7.4, 150mM NaCl, 0.02% sodium azide and 50% glycerol.
Storage/Stability:	Store at -20 °C/1 year
Immunogen:	The antiserum was produced against synthesized phosphopeptide derived from human EGFR around the phosphorylation site of tyrosine 1110 (P-V-Y ^P -H-N).
Purification:	The antibody was affinity-purified from rabbit antiserum by affinity-chromatography using epitope-specific phosphopeptide. The antibody against non-phosphopeptide was removed by chromatography using non-phosphopeptide corresponding to the phosphorylation site.
Specificity/Sensitivity:	EGFR (Phospho-Tyr1110) antibody detects endogenous levels of EGFR only when phosphorylated at tyrosine 1110.
Reactivity:	Human, Mouse, Rat
Applications:	WB: 1:500~1:1000 ELISA: 1:20000
References:	Kaisa Erjala, et.al. (2006) Clin. Cancer Res Jul 2006; 12: 4103-4111. Judit Anido, et.al. (2003) Clin. Cancer Res; 9: 1274. Julian Andreev, et.al. (2001) J. Biol. Chem ; 276: 20130-20135. Suil Kim, et.al. (2002) Am J Physiol Lung Cell Mol Physiol; 283: 67.



For Research Use Only