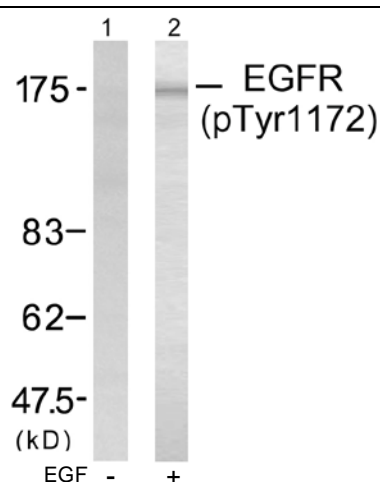




## EGFR (Phospho-Tyr1172) Antibody

E11-7063A

**Catalog Number:** E11-7063A**Amount:** 100µg/100µl**Swiss-Prot No. :** P00533**All Names:** ERBB1, Epidermal growth factor receptor precursor, Receptor protein-tyrosine kinase ErbB-1, kinase EGFR**All Sites:** Human: Tyr1172; Mouse: Tyr1172; Rat: Tyr1172**Form of Antibody:** Rabbit IgG in phosphate buffered saline (without  $Mg^{2+}$  and  $Ca^{2+}$ ), pH 7.4, 150mM NaCl, 0.02% sodium azide and 50% glycerol.**Storage/Stability:** Store at -20°C/1 year**Immunogen:** The antiserum was produced against synthesized phosphopeptide derived from human EGFR around the phosphorylation site of tyrosine 1172 (P-D-Y<sup>P</sup>-Q-Q).**Purification:** The antibody was affinity-purified from rabbit antiserum by affinity-chromatography using epitope-specific phosphopeptide. The antibody against non-phosphopeptide was removed by chromatography using non-phosphopeptide corresponding to the phosphorylation site.**Specificity/Sensitivity:** EGFR (phospho-Tyr1172) antibody detects endogenous levels EGFR only when phosphorylated at tyrosine 1172.**Reactivity:** Human, Mouse, Rat**Applications:** WB: 1:500~1:1000 ELISA: 1:10000**References:** Noguchi T, et al. (1994) Mol Cell Biol; 14(10): 6674-6682.  
Doherty JK, et al. (1999) Proc Natl Acad Sci U S A; 96(19): 10869-10874.  
Kanner SB, et al. (1991) Mol Cell Biol; 11(2): 713-720.  
Wu TT, et al. (1998) Mol Biol Cell; 9(7): 1661-1674.  
O'Rourke DM, et al. (1997) Proc Natl Acad Sci U S A; 94(7): 3250-3255.**For Research Use Only**