

Catalog Number: E11-7064A

Amount: 100µg/100µl

Swiss-Prot No. : P00533

All Names: ERBB1, Epidermal growth factor receptor precursor, Receptor protein-tyrosine kinase ErbB-1, kinase EGFR

All Sites: Human: Tyr1197; Mouse: Tyr1197; Rat: Tyr1196

Form of Antibody: Rabbit IgG in phosphate buffered saline (without Mg²⁺ and Ca²⁺), pH 7.4, 150mM NaCl, 0.02% sodium azide and 50% glycerol.

Storage/Stability: Store at -20°C/1 year

Immunogen: The antiserum was produced against synthesized phosphopeptide derived from human EGFR around the phosphorylation site of tyrosine 1197 (A-E-Y^P-L-R).

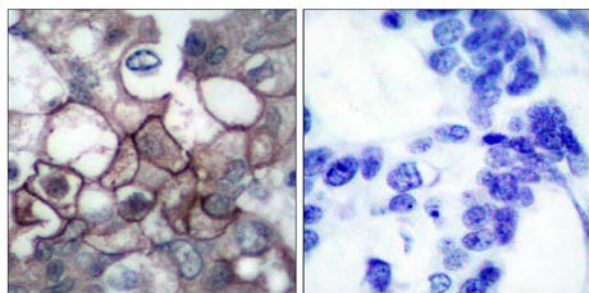
Purification: The antibody was affinity-purified from rabbit antiserum by affinity-chromatography using epitope-specific phosphopeptide. The antibody against non-phosphopeptide was removed by chromatography using non-phosphopeptide corresponding to the phosphorylation site.

Specificity/Sensitivity: EGFR (phospho-Tyr1197) antibody detects endogenous levels of EGFR only when phosphorylated at tyrosine 1197.

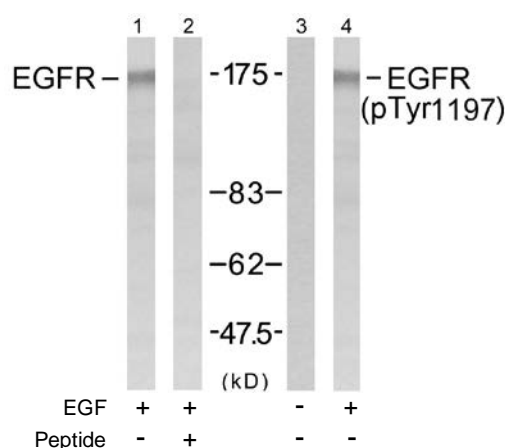
Reactivity: Human, Mouse, Rat

Applications: WB: 1:500~1:1000 IHC: 1:50~1:100
ELISA: 1:10000

References: Corbalan-Garcia S, et al. (1996) Mol Cell Biol; 16(10): 5674-5682.
Kanner SB, et al. (1991) Mol Cell Biol; 11(2): 713-720.
Wu TT, et al. (1998) Mol Biol Cell; 9(7): 1661-1674.
O'Rourke DM, et al. (1997) Proc Natl Acad Sci USA; 94(7): 3250-3255.
Goldstein DJ, et al. (1994) J Virol; 68(7): 4432-4441.



Immunohistochemical analysis of paraffin-embedded human breast carcinoma tissue using EGFR (Phospho-Tyr1197) antibody.



Western blot analysis of extracts from A431 cells untreated or treated with EGF (40µM, 10mins), using EGFR (Ab-1197) antibody (Line 1 and 2) and EGFR (phospho-Tyr1197) antibody (Line 3 and 4).