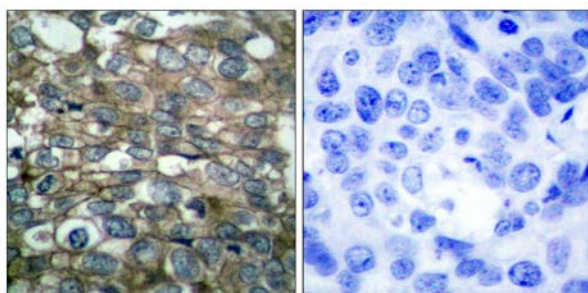




## EGFR (Ab-869) Antibody

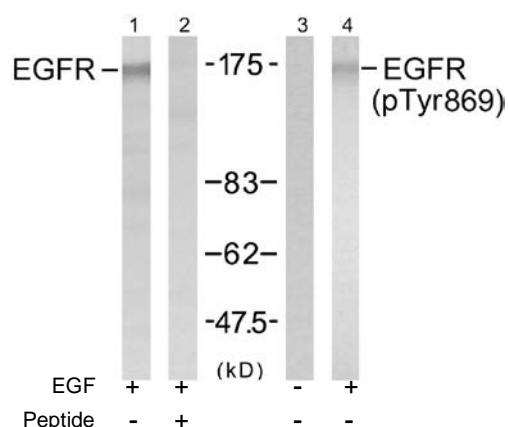
E11-7065B

- Catalog Number:** E11-7065B
- Amount:** 100µg/100µl
- Swiss-Prot No. :** P00533
- All Names:** ERBB1, Epidermal growth factor receptor precursor, Receptor protein-tyrosine kinase ErbB-1, kinase EGFR
- Form of Antibody:** Rabbit IgG in phosphate buffered saline (without Mg<sup>2+</sup> and Ca<sup>2+</sup>), pH 7.4, 150mM NaCl, 0.02% sodium azide and 50% glycerol.
- Storage/Stability:** Store at -20°C/1 year
- Immunogen:** The antiserum was produced against synthesized non-phosphopeptide derived from human EGFR around the phosphorylation site of tyrosine 869 (K-E-Y<sup>P</sup>-H-A).
- Purification:** The antibody was affinity-purified from rabbit antiserum by affinity-chromatography using epitope-specific immunogen.
- Specificity/Sensitivity:** EGFR (Ab-869) antibody detects endogenous levels of total EGFR protein.
- Reactivity:** Human, Mouse, Rat
- Applications:** WB: 1:500~1:1000      IHC: 1:50~1:100  
ELISA: 1:10000
- References:** Gingras AC, et al. (1998) Genes Dev 12(4): 502-513.  
Brugarolas J, et al. (2004) Genes Dev 18(23): 2893-2904.  
Kumar V, et al. (2000) EMBO J 19(5): 1087-1097.  
Moody CA, et al. (2005) J Virol 79(9): 5499-5506.  
Burnett PE, et al. (1998) Proc Natl Acad Sci USA 95(4): 1432-1437.



Peptide                      -                      +

Immunohistochemical analysis of paraffin-embedded human breast carcinoma tissue using EGFR (Ab-869) antibody (#B7065).



Western blot analysis of extracts from A431 cells untreated or treated with EGF (40µM, 10min), using EGFR (Ab-869) antibody (Line1 and 2) and EGFR (phospho- Tyr869) antibody (Line 3 and 4).

**For Research Use Only**