

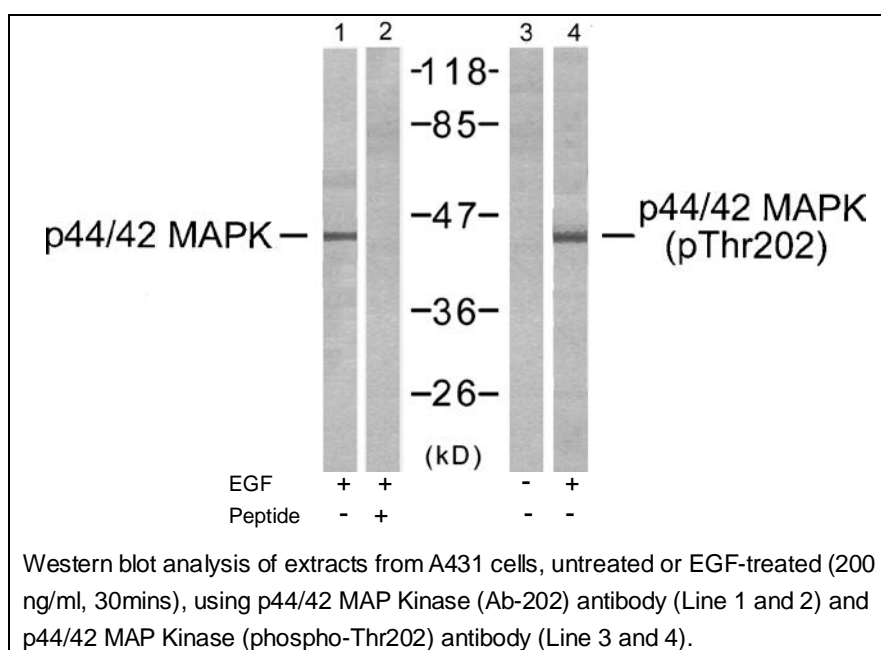


p44/42 MAP Kinase (Phospho-Thr202) Antibody

E11-7073A

Catalog Number: E11-7073A**Amount:** 100µg/100µl**Swiss-Prot No. :** P27361**All Names:** Extracellular signal-regulated kinase 1, ERK-1, Insulin-stimulated MAP2 kinase, MAP kinase 1, MAPK 1, p44-ERK1, ERT2, p44-MAPK, Microtubule-associated protein 2 kinase**All Sites:** Human:Thr202; Mouse: Thr202; Rat:Thr202**Form of Antibody:** Rabbit IgG in phosphate buffered saline (without Mg^{2+} and Ca^{2+}), pH 7.4, 150mM NaCl, 0.02% sodium azide and 50% glycerol.**Storage/Stability:** Store at -20°C/1 year**Immunogen:** The antiserum was produced against synthesized phosphopeptide derived from human p44/42 MAP Kinase around the phosphorylation site of threonine 202 (F-L-T^P-E-Y).**Purification:** The antibody was affinity-purified from rabbit antiserum by affinity-chromatography using epitope-specific phosphopeptide. The antibody against non-phosphopeptide was removed by chromatography using non-phosphopeptide corresponding to the phosphorylation site.**Specificity/Sensitivity:** p44/42 MAP Kinase (Phospho-Thr202) antibody detects endogenous levels of p44/42 MAP Kinase only when phosphorylated at threonine 202.**Reactivity:** Human, Mouse, Rat**Applications:** WB: 1:500~1:1000 ELISA: 1:10000

References: D. Betty Lew, et al. (1999) Am. J. Respir. Cell Mol. Biol; 21: 111.
 George W. Small, (2003) et al.J. Pharmacol. Exp. Ther; 307: 861.
 Jingui Yu, et al. (2005) Anesth. Analg; 101: 315-321.
 Panettieri, et al. (1999) Am J Physiol Lung Cell Mol Physiol; 277: 479.



For Research Use Only