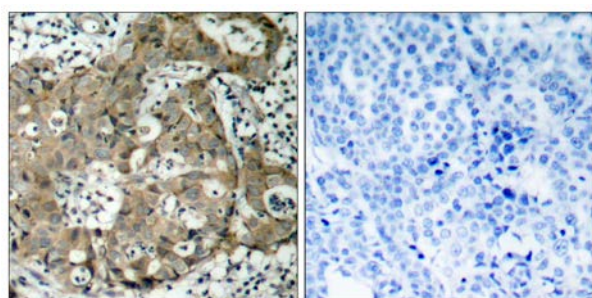




## FKHR (Ab-319) Antibody

E11-7086B

- Catalog Number:** E11-7086B
- Amount:** 100µg/100µl
- Form of Antibody:** Rabbit IgG in phosphate buffered saline (without  $Mg^{2+}$  and  $Ca^{2+}$ ), pH 7.4, 150mM NaCl, 0.02% sodium azide and 50% glycerol.
- Storage/Stability:** Store at -20°C/1 year
- Immunogen:** The antiserum was produced against synthesized non-phosphopeptide derived from human FKHR around the phosphorylation site of serine 319.
- Purification:** The antibody was affinity-purified from rabbit antiserum by affinity-chromatography using epitope-specific immunogen.
- Specificity/Sensitivity:** FKHR (Ab-319) antibody detects endogenous levels of total FKHR protein.
- Reactivity:** Human, Mouse, Rat
- Applications:** WB: 1:500~1:1000      IHC: 1:50~1:100  
ELISA: 1:20000
- Swiss-Prot No. :** Q12778
- References:** Zhao X, et al. (2004) Biochem J; 378(Pt 3): 839-49.  
Rena G, et al. (2002) EMBO J; 21(9): 2263-71.  
Rena G, et al. (2001) Biochem J; 354(Pt 3): 605-12.  
Guo S, et al. (1999) J Biol Chem; 274(24): 17184-92.

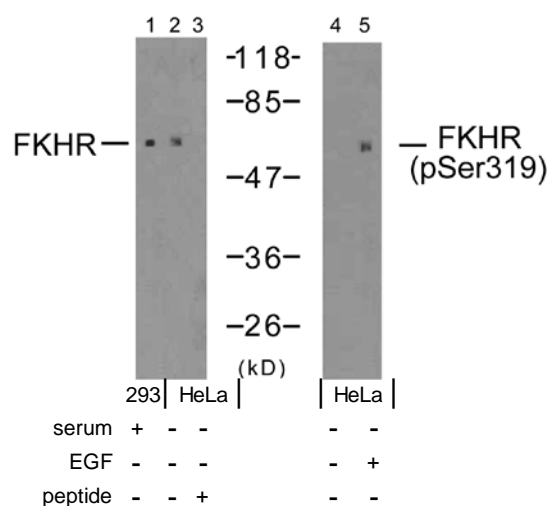


Peptide

-

+

Immunohistochemical analysis of paraffin-embedded human breast carcinoma tissue using FKHR (Ab-319) antibody (#B7086).



Western blot analysis of extracts using FKHR (Ab-319) antibody (Line 1, 2 and 3) and FKHR (phospho-Ser319) antibody (Line 4 and 5).

**For Research Use Only**