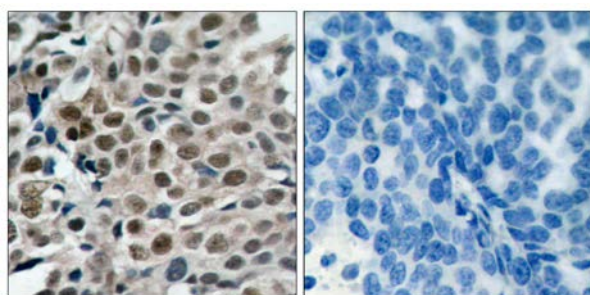




FKHRL1 (Phospho-Ser253) Antibody

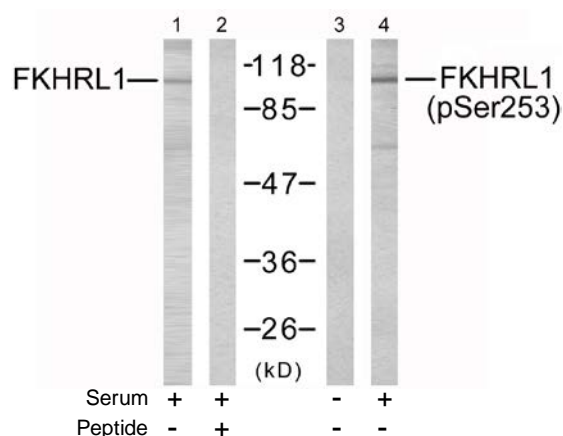
E11-7087A

- Catalog Number:** E11-7087A
- Amount:** 100µg/100µl
- Form of Antibody:** Rabbit IgG in phosphate buffered saline (without Mg²⁺ and Ca²⁺), pH 7.4, 150mM NaCl, 0.02% sodium azide and 50% glycerol.
- Storage/Stability:** Store at -20°C/1 year
- Immunogen:** The antiserum was produced against synthesized phosphopeptide derived from human FKHRL1 around the phosphorylation site of serine 253 (A-V-S^P-M-D).
- Purification:** The antibody was affinity-purified from rabbit antiserum by affinity-chromatography using epitope-specific phosphopeptide. The antibody against non-phosphopeptide was removed by chromatography using non-phosphopeptide corresponding to the phosphorylation site.
- Specificity/Sensitivity:** FKHRL1 (phospho-Ser253) antibody detects endogenous levels of FKHRL1 only when phosphorylated at serine 253.
- Reactivity:** Human, Mouse, Rat
- Applications:** WB: 1:500~1:1000 IHC: 1:50~1:100
ELISA: 1:20000
- Swiss-Prot No. :** O43524
- References:** Smith WW, et al. (2005) J Cell Biol; 169(2): 331-9.
Essafi A, et al. (2005) Oncogene; 24(14): 2317-29.
Brunet A, et al. (2001) Mol Cell Biol; 21(3): 952-65.
Brunet A, et al. (1999) Cell; 96(6): 857-68.



P-Peptide - +

Immunohistochemical analysis of paraffin-embedded human breast carcinoma tissue using FKHRL1 (phospho-Ser253) antibody.



Western blot analysis of extracts from NIH/3T3 cells using FKHRL1 (Ab-253) antibody (Line 1 and 2) and FKHRL1 (phospho-Ser253) antibody (Line 3 and 4).

For Research Use Only