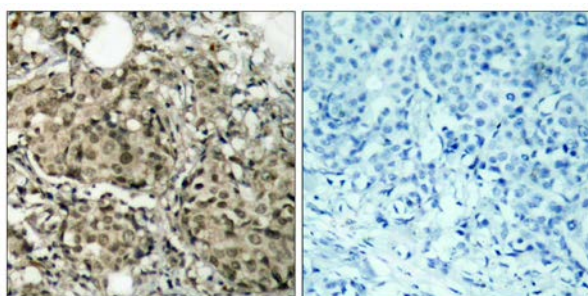




G3BP-1 (Ab-232) Antibody

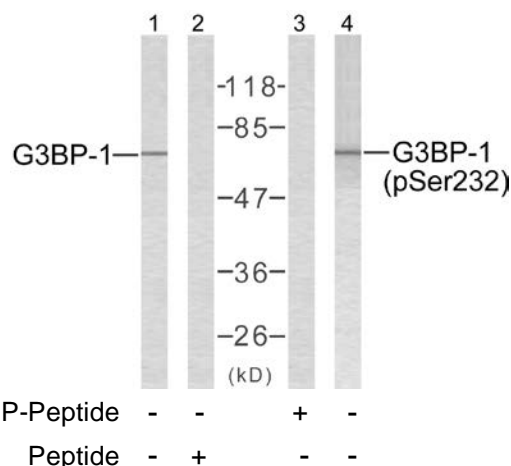
E11-7089B

- Catalog Number:** E11-7089B
- Amount:** 100µg/100µl
- Form of Antibody:** Rabbit IgG in phosphate buffered saline (without Mg^{2+} and Ca^{2+}), pH 7.4, 150mM NaCl, 0.02% sodium azide and 50% glycerol.
- Storage/Stability:** Store at -20 °C/1 year
- Immunogen:** The antiserum was produced against synthesized non-phosphopeptide derived from human G3BP-1 around the phosphorylation site of serine 232.
- Purification:** The antibody was affinity-purified from rabbit antiserum by affinity-chromatography using epitope-specific immunogen.
- Specificity/Sensitivity:** G3BP-1 (Ab-232) antibody detects endogenous levels of total G3BP-1 protein.
- Reactivity:** Human
- Applications:** WB: 1:500~1:1000 IHC: 1:50~1:100
ELISA: 1:10000
- Swiss-Prot No. :** Q13283
- References:** Tao WA, et al. (2005) Nat Methods. 2 (8): 591-598.
Zheng H, et al. (2005) Mol Cell Proteomics. 4(6):721-730.
Beausoleil SA, et al. (2004) Proc Natl Acad Sci USA.101 (33): 12130-12135.
Tourrihre H, et al. (2003) J Cell Biol.160 (6): 823-831.



Peptide - +

Immunohistochemical analysis of paraffin-embedded human breast carcinoma tissue using G3BP-1 (Ab-232) antibody (#B7089).



Western blot analysis of extracts from 293 cells using G3BP-1 (Ab-232) antibody (Line 1 and 2) and G3BP-1 (phospho-Ser232) antibody (Line 3 and 4).