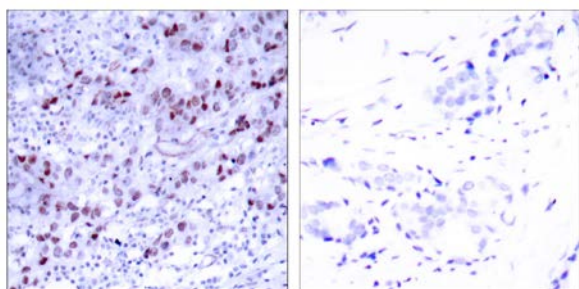




GATA-1 (Ab-142) Antibody

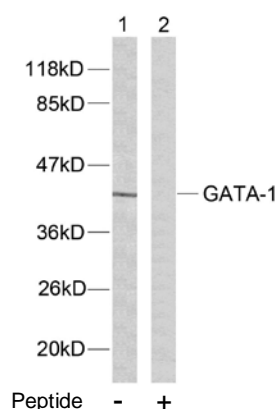
E11-7092B

- Catalog Number:** E11-7092B
- Amount:** 100µg/100µl
- Form of Antibody:** Rabbit IgG in phosphate buffered saline (without Mg^{2+} and Ca^{2+}), pH 7.4, 150mM NaCl, 0.02% sodium azide and 50% glycerol.
- Storage/Stability:** Store at -20°C/1 year
- Immunogen:** The antiserum was produced against synthesized non-phosphopeptide derived from human GATA-1 around the phosphorylation site of serine 142.
- Purification:** The antibody was affinity-purified from rabbit antiserum by affinity-chromatography using epitope-specific immunogen.
- Specificity/Sensitivity:** GATA-1 (Ab-142) antibody detects endogenous levels of total GATA-1 protein.
- Reactivity:** Human, Mouse, Rat
- Applications:** WB: 1:500~1:1000 IHC: 1:50~1:100 IF: 1:100~1:500
ELISA: 1:10000 IP: Various Dilution
- Swiss-Prot No. :** P15976
- References:** Zon LI, et al. (1990) Proc Natl Acad. Sci USA. 87: 668-672.
Trainor C D, et al. (1990) Nature. 343: 92-96.
Nichols K E, et al. (2000) Nat Genet. 24: 266-270.
Freson K, et al. (2001) Blood. 98: 85-92.
Mehaffey M G, et al. (2001) Blood. 98: 2681-2688.



Peptide - +

Immunohistochemical analysis of paraffin-embedded human breast carcinoma tissue using GATA-1 (Ab-142) antibody (#B7092).



Western blot analysis of extracts from K562 cells using GATA-1 (Ab-142) antibody (#B7092).

For Research Use Only