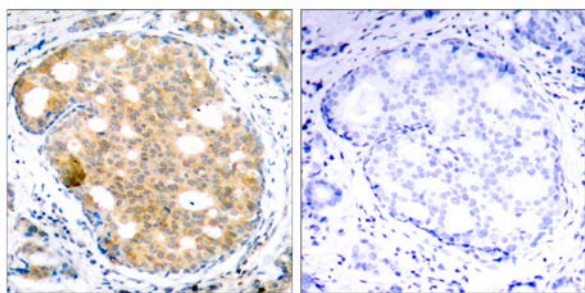




## GSK3 $\beta$ (Ab-9) Antibody

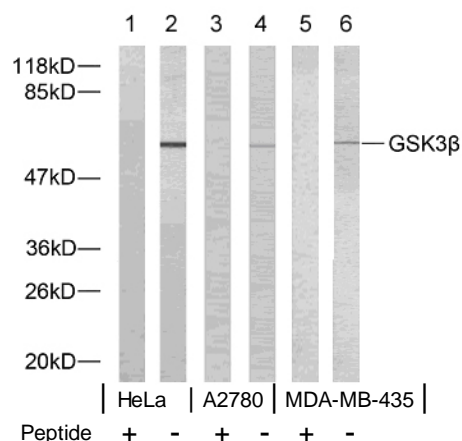
E11-7098B

- Catalog Number:** E11-7098B
- Amount:** 100 $\mu$ g/100 $\mu$ l
- Form of Antibody:** Rabbit IgG in phosphate buffered saline (without Mg<sup>2+</sup> and Ca<sup>2+</sup>), pH 7.4, 150mM NaCl, 0.02% sodium azide and 50% glycerol.
- Storage/Stability:** Store at -20°C/1 year
- Immunogen:** The antiserum was produced against synthesized non-phosphopeptide derived from human GSK3 $\beta$  around the phosphorylation site of serine 9.
- Purification:** The antibody was affinity-purified from rabbit antiserum by affinity-chromatography using epitope-specific immunogen.
- Specificity/Sensitivity:** GSK3 $\beta$  (Ab-9) antibody detects endogenous levels of total GSK3 $\beta$  protein.
- Reactivity:** Human, Mouse, Rat
- Applications:** WB: 1:500~1:1000      IHC: 1:50~1:100  
ELISA: 1:20000      IP: Various Dilution
- Swiss-Prot No. :** P49841
- References:** Fan G, et al. (2003) J Biol Chem. 278(52): 52432-52436.  
Barry FA, et al. (2003) FEBS Lett. 553(1-2): 173-178.  
Welsh, et al. (1996) Trends Cell Biol. 6: 274-279.  
Srivastava A K, et al. (1998) Mol Cell Biochem. 182: 135-141.  
Cross D. A, et al. (1995) Nature. 378: 785-789.



Peptide                      -                      +

Immunohistochemical analysis of paraffin-embedded human breast carcinoma tissue using GSK3 $\beta$  (Ab-9) antibody (#B7098).



Western blot analysis of extracts using GSK3 $\beta$  (Ab-9) antibody (#B7098).

**For Research Use Only**