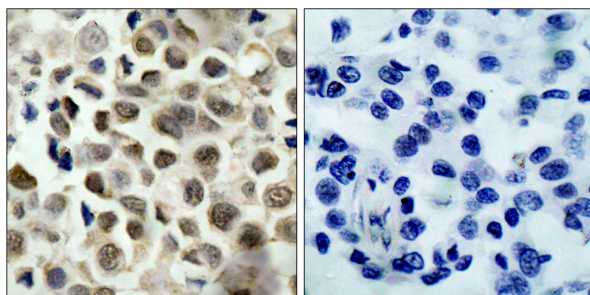




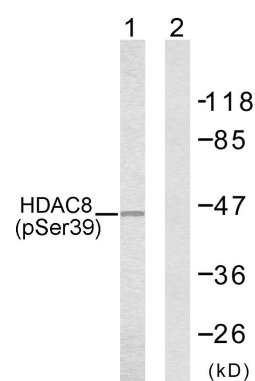
HDAC8 (Phospho-Ser39) Antibody

E11-7102A

- Catalog Number:** E11-7102A
- Amount:** 100µg/100µl
- Form of Antibody:** Rabbit IgG in phosphate buffered saline (without Mg²⁺ and Ca²⁺), pH 7.4, 150mM NaCl, 0.02% sodium azide and 50% glycerol.
- Storage/Stability:** Store at -20°C/1 year
- Immunogen:** The antiserum was produced against synthesized phosphopeptide derived from human HDAC8 around the phosphorylation site of Serine 39(R-A-S^P-M-V).
- Purification:** The antibody was affinity-purified from rabbit antiserum by affinity-chromatography using epitope-specific phosphopeptide. The antibody against non-phosphopeptide was removed by chromatography using non-phosphopeptide corresponding to the phosphorylation site.
- Specificity/Sensitivity** HDAC8(Phospho-Ser39) Antibody detects endogenous levels of HDAC8 only
: when phosphorylated at Serine 39.
- Reactivity:** Human, Mouse, Rat
- Applications:** WB: 1:500~1:1000 IHC: 1:50~1:100
ELISA: 1:20000
- Swiss-Prot No. :** Q9BY41
- References:** Lee H, et al. (2004) Mol Cell Biol. 24(2): 765-773.



Immunohistochemical analysis of paraffin-embedded lung carcinoma, using HDAC8 (Phospho-Ser39) Antibody. Left: Untreated; Right: Treated with synthesized phosphopeptide.



Western blot analysis using HDAC8 (Phospho-Ser39) Antibody. Line1: The extracts from NIH/3T3 cells; Line2: The extracts from NIH/3T3 cells using HDAC8 (Phospho-Ser39) Antibody preincubated with synthesized peptide.

For Research Use Only