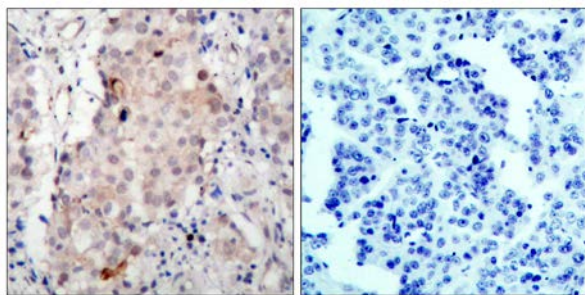




HER2Phospho-Tyr1221/Tyr1222)Antibody

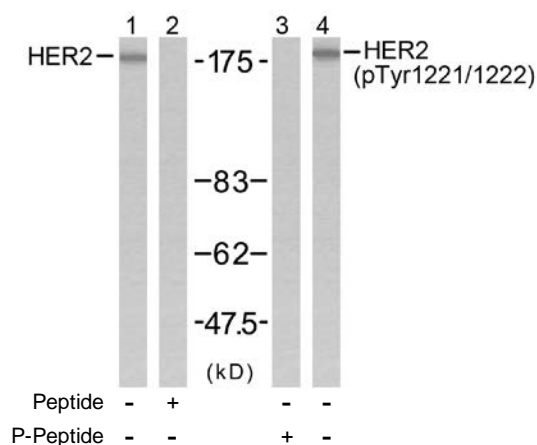
E11-7103A

- Catalog Number:** E11-7103A
- Amount:** 100µg/100µl
- Form of Antibody:** Rabbit IgG in phosphate buffered saline (without Mg^{2+} and Ca^{2+}), pH 7.4, 150mM NaCl, 0.02% sodium azide and 50% glycerol.
- Storage/Stability:** Store at -20°C/1 year
- Immunogen:** The antiserum was produced against synthesized phosphopeptide derived from human HER2 around the phosphorylation site of tyrosine1221/1222 (N-L-Y^P-Y^P-W).
- Purification:** The antibody was affinity-purified from rabbit antiserum by affinity-chromatography using epitope-specific phosphopeptide. The antibody against non-phosphopeptide was removed by chromatography using non-phosphopeptide corresponding to the phosphorylation site.
- Specificity/Sensitivity:** HER2 (phospho-Tyr1221/Tyr1222) antibody detects endogenous levels of HER2 only when phosphorylated at tyrosine 1221/1222.
- Reactivity:** Human
- Applications:** WB: 1:500~1:1000 IHC: 1:50~1:100
ELISA: 1:20000 IP: Various Dilution
- Swiss-Prot No. :** P04626
- References:** Marone R, et al. (2004) Nat Cell Biol; 6(6): 515-22.
Ren Z, et al. (2002) J Biol Chem; 277(41): 38486-93.



P-Peptide - +

Immunohistochemical analysis of paraffin-embedded human breast carcinoma tissue using HER2 (phospho-Tyr1221/Tyr1222) antibody.



Western blot analysis of extracts from SK-OV3 cells using HER2 (Ab-1221/1222) antibody (Line 1 and 2) and HER2 (phospho-Tyr1221/Tyr1222) antibody (Line 3 and 4).

For Research Use Only