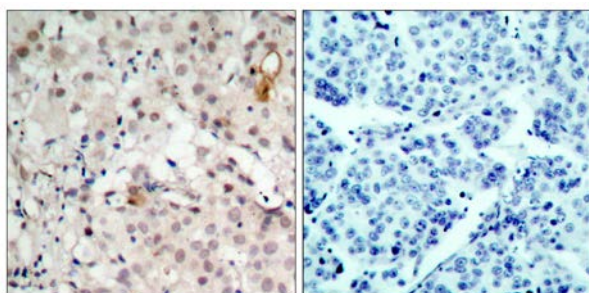




HER2 (Ab-1221/1222) Antibody

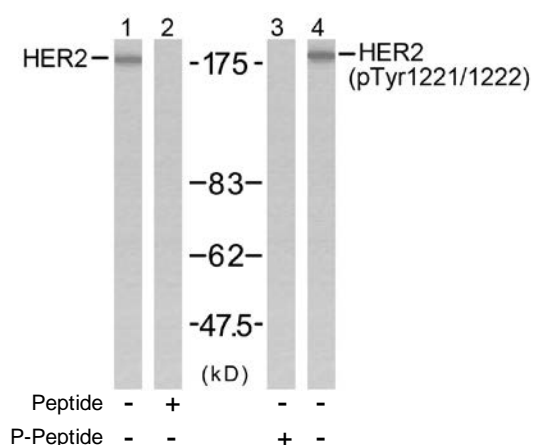
E11-7103B

- Catalog Number:** E11-7103B
- Amount:** 100µg/100µl
- Form of Antibody:** Rabbit IgG in phosphate buffered saline (without Mg^{2+} and Ca^{2+}), pH 7.4, 150mM NaCl, 0.02% sodium azide and 50% glycerol.
- Storage/Stability:** Store at -20°C/1 year
- Immunogen:** The antiserum was produced against synthesized non-phosphopeptide derived from human HER2 around the phosphorylation site of tyrosine 1221/1222.
- Purification:** The antibody was affinity-purified from rabbit antiserum by affinity-chromatography using epitope-specific immunogen.
- Specificity/Sensitivity:** HER2 (Ab-1221/1222) antibody detects endogenous levels of total HER2 protein.
- Reactivity:** Human
- Applications:** WB: 1:500~1:1000 IHC: 1:50~1:100
ELISA: 1:20000
- Swiss-Prot No. :** P04626
- References:** Marone R, et al. (2004) Nat Cell Biol; 6(6): 515-22.
Ren Z, et al. (2002) J Biol Chem; 277(41): 38486-93.
Ouyang X, et al. (1998) Carcinogenesis; 19(11): 2013-9.
Ouyang X, et al. (1998) Exp Cell Res; 241(2): 467-75.
Klapper, L. N. et al. (2000) Cancer Res. 60, 3384-3388.



Peptide - +

Immunohistochemical analysis of paraffin-embedded human breast carcinoma tissue using HER2 (Ab-1221/1222) antibody (#B7103).



Western blot analysis of extracts from SK-OV3 cells using HER2 (Ab-1221/1222) antibody (Line 1 and 2) and HER2 (phospho-Tyr1221/Tyr1222) antibody (Line 3 and 4).

For Research Use Only