



## HER2(Phospho-Tyr1248) Antibody

E11-7104A

**Catalog Number:** E11-7104A

**Amount:** 100µg/100µl

**Form of Antibody:** Rabbit IgG in phosphate buffered saline (without Mg<sup>2+</sup> and Ca<sup>2+</sup>), pH 7.4, 150mM NaCl, 0.02% sodium azide and 50% glycerol.

**Storage/Stability:** Store at -20°C/1 year

**Immunogen:** The antiserum was produced against synthesized phosphopeptide derived from human HER2 around the phosphorylation site of tyrosine1248 (P-E-Y<sup>P</sup>-L-G).

**Purification:** The antibody was affinity-purified from rabbit antiserum by affinity-chromatography using epitope-specific phosphopeptide. The antibody against non-phosphopeptide was removed by chromatography using non-phosphopeptide corresponding to the phosphorylation site.

**Specificity/Sensitivity:** HER2 (phospho-Tyr1248) antibody detects endogenous levels of HER2 only when phosphorylated at tyrosine1248.

**Reactivity:** Human, Mouse, Rat

**Applications:** WB: 1:500~1:3000      IHC: 1:50~1:100

ELISA: 1:20000

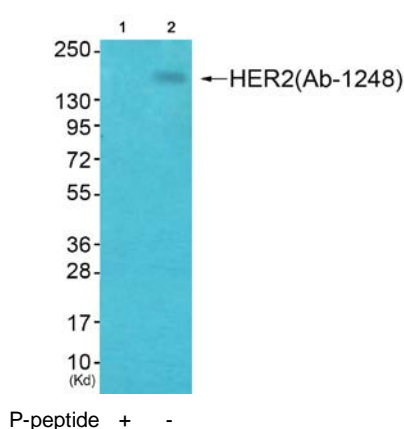
**Swiss-Prot No. :** P04626

**References:** Ramsauer VP, et al. (2003) J Biol Chem; 278(32): 30142-7.

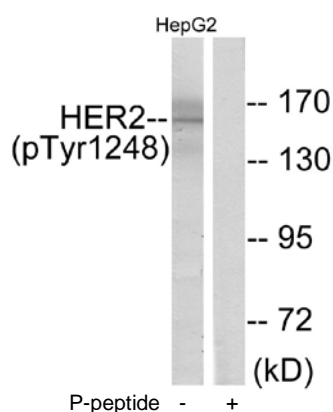
Jepson S, et al. (2002) Oncogene; 21(49): 7524-32.

Ren Z, et al. (2002) J Biol Chem; 277(41): 38486-93.

Eppenberger-Castori S, et al. (2001) J Clin Oncol; 19(3): 645-56.

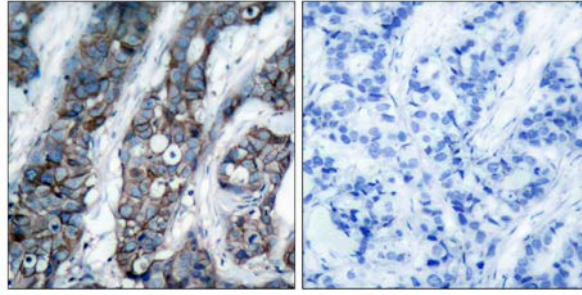


Western blot analysis of extracts from HepG2 cells, using HER2 (phospho-Tyr1248) antibody.



Western blot analysis of extracts from HepG2 cells, using HER2 (phospho-Tyr1248) antibody.

**For Research Use Only**



P-peptide -                      +

Immunohistochemical analysis of paraffin-embedded human breast carcinoma tissue, using HER2 (phospho-Tyr1248) antibody.