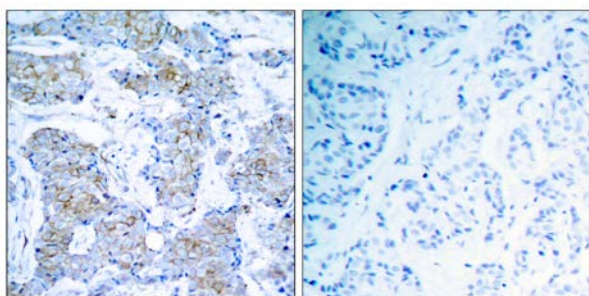




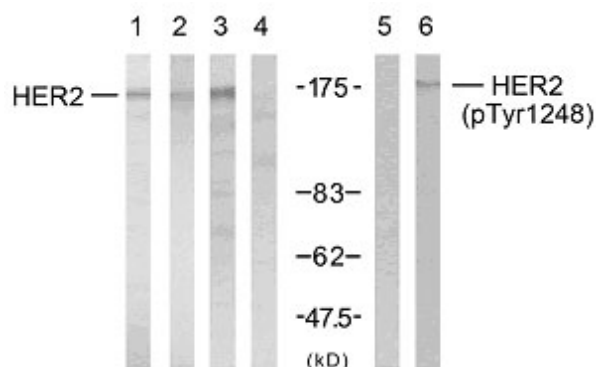
## HER2 (Ab-1248) Antibody

E11-7104B

- Catalog Number:** E11-7104B
- Amount:** 100µg/100µl
- Form of Antibody:** Rabbit IgG in phosphate buffered saline (without  $Mg^{2+}$  and  $Ca^{2+}$ ), pH 7.4, 150mM NaCl, 0.02% sodium azide and 50% glycerol.
- Storage/Stability:** Store at -20°C/1 year
- Immunogen:** The antiserum was produced against synthesized non-phosphopeptide derived from human HER2 around the phosphorylation site of Tyrosine1248.
- Purification:** The antibody was affinity-purified from rabbit antiserum by affinity-chromatography using epitope-specific immunogen.
- Specificity/Sensitivity:** HER2 (Ab-1248) Antibody detects endogenous levels of total HER2 protein.
- Reactivity:** Human, Mouse, Rat
- Applications:** WB: 1:500~1:1000      IHC: 1:50~1:100  
ELISA: 1:5000
- Swiss-Prot No. :** P04626
- References:** Ramsauer VP, et al. (2003)J Biol Chem; 278(32): 30142-7.  
Jepson S, et al. (2002)Oncogene; 21(49): 7524-32.  
Ren Z, et al. (2002)J Biol Chem; 277(41): 38486-93.  
Eppenberger-Castori S, et al. (2001)J Clin Oncol; 19(3): 645-56.



Immunohistochemical analysis of paraffin-embedded breast carcinoma, using HER2 (Ab-1248) Antibody. Left: Untreated; Right: Treated with synthesized peptide.



Western blot analysis using HER2(Ab-1248) Antibody and HER2(Phospho-Tyr1248) Antibody. Line1: The extracts from A2780 cells; Line2: The extracts from HeLa cells; Line3: The extracts from SK-OV3 cells; Line4: The extracts from SK-OV3 cells preincubated with synthesized peptide.

**For Research Use Only**