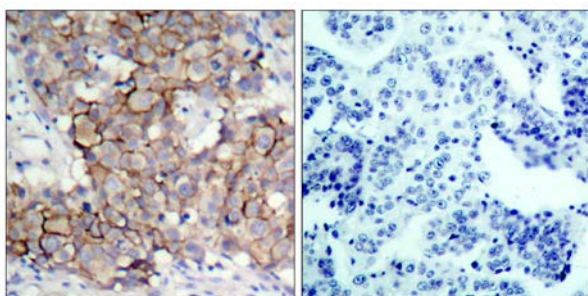




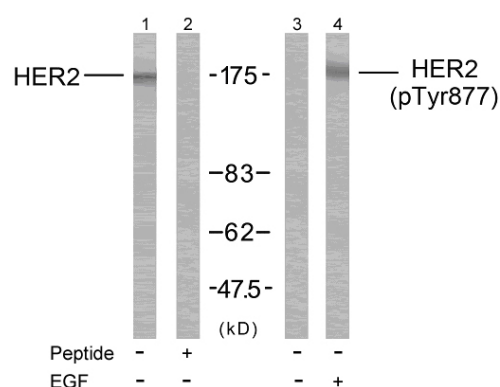
HER2 (Phospho-Tyr877) Antibody

E11-7105A

- Catalog Number:** E11-7105A
- Amount:** 100µg/100µl
- Form of Antibody:** Rabbit IgG in phosphate buffered saline (without Mg^{2+} and Ca^{2+}), pH 7.4, 150mM NaCl, 0.02% sodium azide and 50% glycerol.
- Storage/Stability:** Store at -20°C/1 year
- Immunogen:** The antiserum was produced against synthesized phosphopeptide derived from human HER2 around the phosphorylation site of Tyrosine 877 (T-E-Y^P-H-A).
- Purification:** The antibody was affinity-purified from rabbit antiserum by affinity-chromatography using epitope-specific phosphopeptide. The antibody against non-phosphopeptide was removed by chromatography using non-phosphopeptide corresponding to the phosphorylation site.
- Specificity/Sensitivity:** HER2(Phospho-Tyr877) Antibody detects endogenous levels of HER2 only when phosphorylated at Tyrosine 877.
- Reactivity:** Human, Mouse, Rat
- Applications:** WB: 1:500~1:1000 IHC: 1:50~1:100
ELISA: 1:10000 IP: Various Dilution
- Swiss-Prot No. :** P04626
- References:** Dittadi, R. et al. (2000) J. Natl. Cancer Inst. 92, 1443-1444.
Muthuswamy, S. K. et al. (1999) Mol. Cell. Biol. 19, 6845-6857.
Qian, X. et al. (1994) Proc. Natl. Acad. Sci. USA 91, 1500-1504.



Immunohistochemical analysis of paraffin-embedded breast carcinoma, using HER2 (Phospho-Tyr877) Antibody. Left: Untreated; Right: Treated with synthesized phosphopeptide.



Western blot analysis of extracts from MDA-MB-231 cells treated or untreated with EGF using HER2 (Ab-877) Antibody and HER2 (Phospho- Tyr877) Antibody.

For Research Use Only