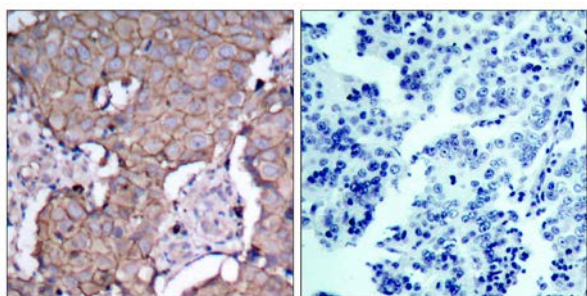




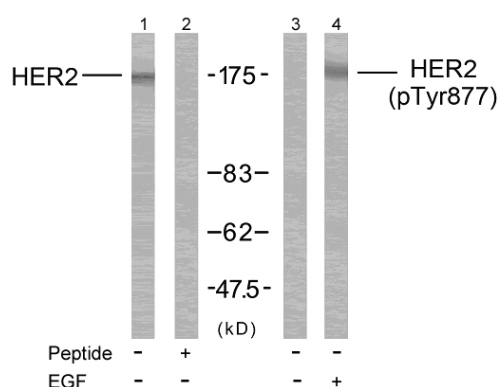
HER2 (Ab-877) Antibody

E11-7105B

- Catalog Number:** E11-7105B
- Amount:** 100µg/100µl
- Form of Antibody:** Rabbit IgG in phosphate buffered saline (without Mg^{2+} and Ca^{2+}), pH 7.4, 150mM NaCl, 0.02% sodium azide and 50% glycerol.
- Storage/Stability:** Store at -20°C/1 year
- Immunogen:** The antiserum was produced against synthesized non-phosphopeptide derived from human HER2 around the phosphorylation site of Tyrosine 877.
- Purification:** The antibody was affinity-purified from rabbit antiserum by affinity-chromatography using epitope-specific immunogen.
- Specificity/Sensitivity:** HER2 (Ab-877) Antibody detects endogenous levels of total HER2 protein.
- Reactivity:** Human, Mouse, Rat
- Applications:** WB: 1:500~1:1000 IHC: 1:50~1:100
ELISA: 1:20000
- Swiss-Prot No. :** P04626
- References:** Dittadi, R. et al. (2000) J. Natl. Cancer Inst. 92, 1443-1444.
Muthuswamy, S. K. et al. (1999) Mol. Cell. Biol. 19, 6845-6857.
Qian, X. et al. (1994) Proc. Natl. Acad. Sci. USA 91, 1500-1504.
Kwon, Y. K. et al. (1997) J. Neurosci. 17, 8293-8299.
Klapper, L. N. et al. (2000) Cancer Res. 60, 3384-3388.



Immunohistochemical analysis of paraffin-embedded breast carcinoma, using HER2 (Ab-877) Antibody (#B7105). Left: Untreated; Right: Treated with synthesized peptide.



Western blot analysis of extracts from MDA-MB-231 cells treated or untreated with EGF using HER2 (Ab-877) Antibody (#B7105) and HER2 (Phospho-Tyr877) Antibody (#11169). Line1:Using #B7105; Line2: Using #B7105 preincubated with synthesized peptide.

For Research Use Only