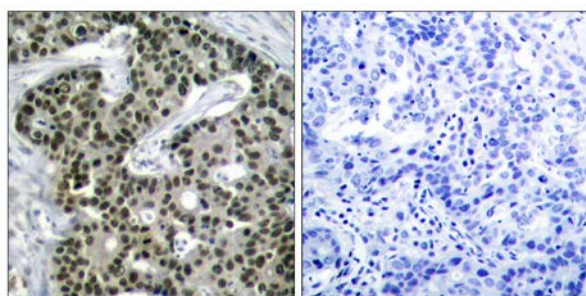




## HSF1 (Phospho-Ser303) Antibody

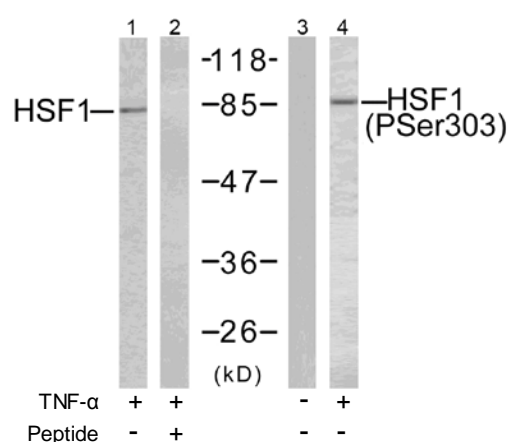
E11-7109A

- Catalog Number:** E11-7109A
- Amount:** 100µg/100µl
- Swiss-Prot No.:** Q00613
- All Names:** HSTF1, Heat shock factor protein 1
- All Sites:** Human: Ser303
- Form of Antibody:** Rabbit IgG in phosphate buffered saline (without  $Mg^{2+}$  and  $Ca^{2+}$ ), pH 7.4, 150mM NaCl, 0.02% sodium azide and 50% glycerol.
- Storage/Stability:** Store at -20°C/1 year
- Immunogen:** The antiserum was produced against synthesized phosphopeptide derived from human HSF1 around the phosphorylation site of serine 303 (P-P-S<sup>P</sup>-P-P).
- Purification:** The antibody was affinity-purified from rabbit antiserum by affinity-chromatography using epitope-specific phosphopeptide. The antibody against non-phosphopeptide was removed by chromatography using non-phosphopeptide corresponding to the phosphorylation site.
- Specificity/Sensitivity:** HSF1 (Phospho-Ser303) antibody detects endogenous levels of HSF1 only when phosphorylated at serine 303.
- Reactivity:** Human
- Applications:** WB: 1:500~1:1000      IHC: 1:50~1:100  
ELISA: 1:20000
- References:** Parvaneh Rafiee, et.al. (2006) Am J Physiol Cell Physiol; 291: C931-C945.  
Fumika Shinozaki, et.al. (2006) J. Biol. Chem; 281: 16361-16369.  
Eiichi Takaki, et.al. (2006) J. Biol. Chem; 281: 4931-4937.  
Jan-Jong Hung, et.al. (1998) J. Biol. Chem; 273: 31924.



P-Peptide                      -                      +

Immunohistochemical analysis of paraffin-embedded human breast carcinoma tissue using HSF1 (Phospho-Ser303) antibody.



Western blot analysis of extracts from MCF cells untreated or treated with TNF- $\alpha$  (20ng/ml, 30mins), using HSF1 (Ab-303) antibody (Line 1 and 2), and HSF1 (Phospho-Ser303) antibody (Line 3 and 4).

**For Research Use Only**