



## IRS-1 (Ab-307) Antibody

E11-7120B

**Catalog Number:** E11-7120B

**Amount:** 100µg/100µl

**Swiss-Prot No.:** P35568

**All Names:** Insulin receptor substrate 1, IRS1 CORONARY ARTERY DISEASE

**Form of Antibody:** Rabbit IgG in phosphate buffered saline (without Mg<sup>2+</sup> and Ca<sup>2+</sup>), pH 7.4, 150mM NaCl, 0.02% sodium azide and 50% glycerol.

**Storage/Stability:** Store at -20°C/1 year

**Immunogen:** The antiserum was produced against synthesized non-phosphopeptide derived from human IRS-1 around the phosphorylation site of serine 307 (T-E-S-I-T).

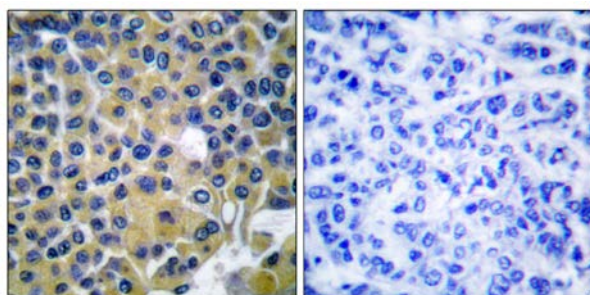
**Purification:** The antibody was affinity-purified from rabbit antiserum by affinity-chromatography using epitope-specific immunogen.

**Specificity/Sensitivity** IRS-1 (Ab-307) antibody detects endogenous levels of total IRS-1 protein.

**Reactivity:** Human, Mouse, Rat

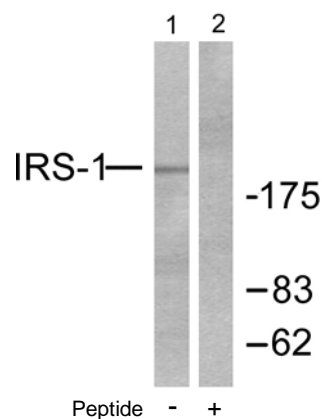
**Applications:** WB: 1:500~1:1000      IHC: 1:50~1:100  
ELISA: 1:20000

**References:** Philip J. Papst, et al. (1998) J. Biol. Chem; 273: 15077.  
Satoru Eguchi, et al. (1999) J. Biol. Chem 1; 274: 36843.  
Ana González-García, et al. (2002) J. Biol. Chem; 277: 1500-1508.  
Ulrike Krause, et al. (2002) Eur. J. Biochem; 269: 3751.



Peptide                      -                      +

Immunohistochemical analysis of paraffin-embedded human breast carcinoma tissue using IRS-1 (Ab-307) antibody (#B7120).



Western blot analysis of extracts from A431 cells, using IRS-1 (Ab-307) antibody (#B7120, Line 1 and 2).

**For Research Use Only**