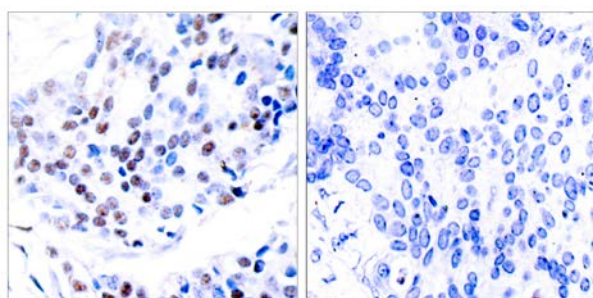




c-Jun (Ab-239) Antibody

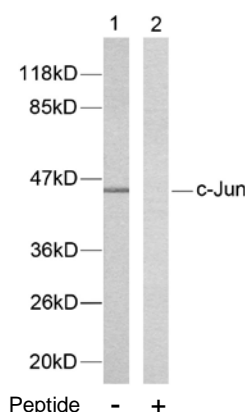
E11-7131B

- Catalog Number:** E11-7131B
- Amount:** 100µg/100µl
- Form of Antibody:** Rabbit IgG in phosphate buffered saline (without Mg^{2+} and Ca^{2+}), pH 7.4, 150mM NaCl, 0.02% sodium azide and 50% glycerol.
- Storage/Stability:** Store at -20°C/1 year
- Immunogen:** The antiserum was produced against synthesized non-phosphopeptide derived from human c-Jun around the phosphorylation site of threonine 239.
- Purification:** The antibody was affinity-purified from rabbit antiserum by affinity-chromatography using epitope-specific immunogen.
- Specificity/Sensitivity:** c-Jun (Ab-239) antibody detects endogenous levels of total c-Jun protein.
- Reactivity:** Human, Mouse, Rat
- Applications:** WB: 1:500~1:1000 IHC: 1:50~1:100
ELISA: 1:20000
- Swiss-Prot No. :** P05412
- References:** Boyle W J, et al. (1991) Cell. 64(3): 573-584.
Binetruy B, et al. (1991) Nature. 351: 122-127.
Smeal T, et al. (1991) Nature. 354:494-496.
Derijard B, et al. (1994) Cell. 76:1025-1037.
Kyriakis J M, et al. (1994) Nature. 369: 156-160.



Peptide - +

Immunohistochemical analysis of paraffin-embedded human breast carcinoma tissue using c-Jun (Ab-239) antibody (#B7131).



Western blot analysis of extracts from HeLa cells using c-Jun (Ab-239) antibody (#B7131).

For Research Use Only