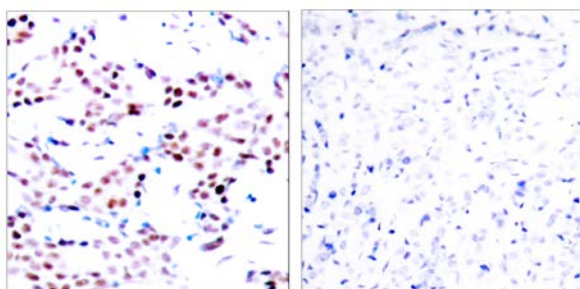




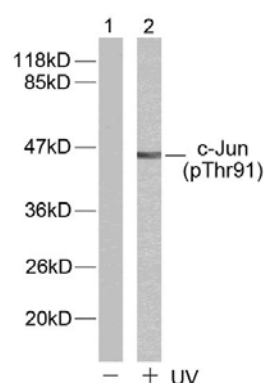
c-Jun (Phospho-Thr91) Antibody

E11-7132A

- Catalog Number:** E11-7132A
- Amount:** 100µg/100µl
- Form of Antibody:** Rabbit IgG in phosphate buffered saline (without Mg^{2+} and Ca^{2+}), pH 7.4, 150mM NaCl, 0.02% sodium azide and 50% glycerol.
- Storage/Stability:** Store at -20°C/1 year
- Immunogen:** The antiserum was produced against synthesized phosphopeptide derived from human c-Jun around the phosphorylation site of Threonine 91.
- Purification:** The antibody was affinity-purified from rabbit antiserum by affinity-chromatography using epitope-specific phosphopeptide. The antibody against non-phosphopeptide was removed by chromatography using non-phosphopeptide corresponding to the phosphorylation site.
- Specificity/Sensitivity:** c-Jun (Phospho-Thr91) Antibody detects endogenous levels of c-Jun only when phosphorylated at Threonine 91.
- Reactivity:** Human, Mouse, Rat
- Applications:** WB: 1:500~1:1000 IHC: 1:50~1:100
ELISA: 1:20000
- Swiss-Prot No. :** P05412
- References:** Binetruy B, et al. (1991) Nature. 351: 122-127.
Smeal T, et al. (1991) Nature. 354:494-496.
Derijard B, et al. (1994) Cell. 76:1025-1037.
Kyriakis J M, et al. (1994) Nature. 369: 156-160.



Immunohistochemical analysis of paraffin-embedded breast carcinoma. Left: Using c-Jun (Phospho-Thr91) Antibody; Right: The same antibody preincubated with synthesized phosphopeptide.



Western blot analysis of extracts using c-Jun (Phospho-Thr91) Antibody. Line1: The extracts from HeLa cells untreated; Line2: The extracts from HeLa cells treated with UV.

For Research Use Only