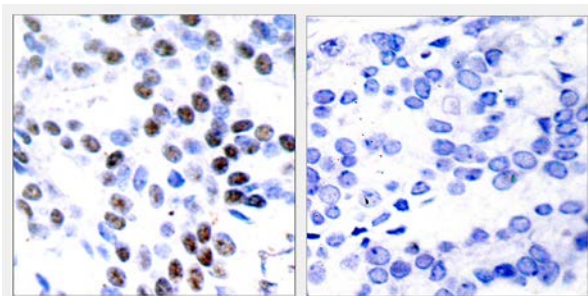




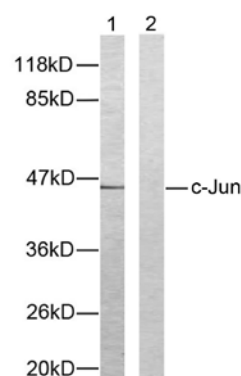
## c-Jun(Ab-93) Antibody

**E11-7133B**

- Catalog Number:** E11-7133B
- Amount:** 100µg/100µl
- Form of Antibody:** Rabbit IgG in phosphate buffered saline (without Mg<sup>2+</sup> and Ca<sup>2+</sup>), pH 7.4, 150mM NaCl, 0.02% sodium azide and 50% glycerol.
- Storage/Stability:** Store at -20°C/1 year
- Immunogen:** The antiserum was produced against synthesized non-phosphopeptide derived from human c-Jun around the phosphorylation site of Threonine 93.
- Purification:** The antibody was affinity-purified from rabbit antiserum by affinity-chromatography using epitope-specific immunogen.
- Specificity/Sensitivity:** c-Jun (Ab-93) Antibody detects endogenous levels of c-Jun protein around Threonine 93.
- Reactivity:** Human, Mouse, Rat
- Applications:** WB: 1:500~1:1000    IHC: 1:50~1:100  
ELISA: 1:20000
- Swiss-Prot No. :** P05412
- References:** Binetruy B, et al. (1991) Nature. 351: 122-127.  
Smeal T, et al. (1991) Nature. 354:494-496.  
Derijard B, et al. (1994) Cell. 76:1025-1037.  
Kyriakis J M, et al. (1994) Nature. 369: 156-160.



Immunohistochemical analysis of paraffin-embedded breast carcinoma. Left: Using c-Jun (Ab-93) Antibody (#B7133); Right: The same antibody preincubated with synthesized peptide.



Western blot analysis of extracts from HeLa cells. Line1: Using c-Jun(Ab-93) Antibody; Line2: The same antibody preincubated with synthesized peptide.

**For Research Use Only**