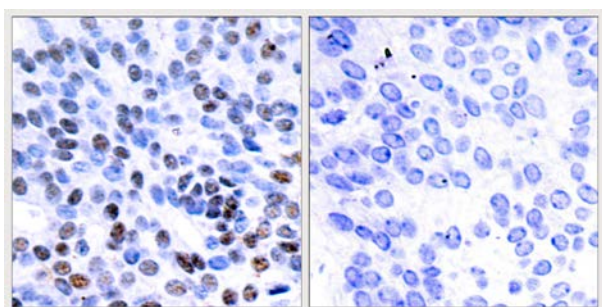




JunB (Ab-259) Antibody

E11-7135B

- Catalog Number:** E11-7135B
- Amount:** 100µg/100µl
- Form of Antibody:** Rabbit IgG in phosphate buffered saline (without Mg²⁺ and Ca²⁺), pH 7.4, 150mM NaCl, 0.02% sodium azide and 50% glycerol.
- Storage/Stability:** Store at -20°C/1 year
- Immunogen:** The antiserum was produced against synthesized non-phosphopeptide derived from human JunB around the phosphorylation site of serine 259.
- Purification:** The antibody was affinity-purified from rabbit antiserum by affinity-chromatography using epitope-specific immunogen.
- Specificity/Sensitivity:** JunB (Ab-259) antibody detects endogenous levels of total JunB protein.
- Reactivity:** Human, Mouse, Rat
- Applications:** WB: 1:500~1:1000 IHC: 1:50~1:100 IF: 1:100~1:500
ELISA: 1:20000 IP: Various Dilution
- Swiss-Prot No. :** P17275
- References:** Beausoleil S A, et al. (2004) Proc Natl Acad Sci U S A. 101(33): 12130-12135.

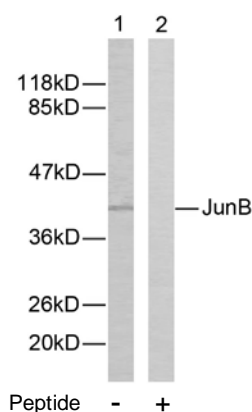


Peptide

-

+

Immunohistochemical analysis of paraffin-embedded human breast carcinoma tissue using JunB (Ab-259) antibody (#B7135).



Peptide

-

+

Western blot analysis of extracts from HeLa cells using JunB (Ab-259) antibody (#B7135).

For Research Use Only