



Lck (Phospho-Tyr393) Antibody

E11-7139A**Catalog Number:** E11-7139A**Concentration:** 1mg/ml**Swiss-Prot No.:** P06239**Other Names:** EC 2.7.10.2; kinase Lck; LCK; LSK; LSK-T; lymphocyte-specific protein tyrosine kinase; P56-LCK; T cell-specific protein-tyrosine kinase**All Sites:** Human: Ser24; Mouse: Ser24; Rat: Ser24**Storage/Stability:** Store at -20 °C/1 year**Form of Antibody:** Rabbit IgG in phosphate buffered saline (without Mg^{2+} and Ca^{2+}), pH 7.4, 150mM NaCl, 0.02% sodium azide and 50% glycerol.**Immunogen:** The antiserum was produced against synthesized phosphopeptide derived from human Lck around the phosphorylation site of tyrosine 393 (N-E-Y^P-T-A).**Purification:** The antibody was affinity-purified from

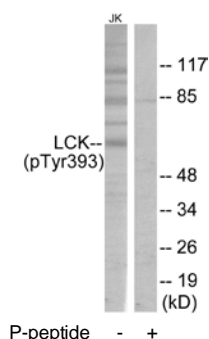
rabbit antiserum by affinity-chromatography using epitope-specific phosphopeptide. The antibody against non-phosphopeptide was removed by chromatography using non-phosphopeptide corresponding to the phosphorylation site.

Specificity: Lck (Phospho-Tyr393) antibody detects endogenous levels of Lck only when phosphorylated at tyrosine 393.**Reactivity:** Human, Mouse, Rat**Applications:** WB: 1:500~1:1000 IF: 1:100~1:500
ELISA: 1:10000**References:**

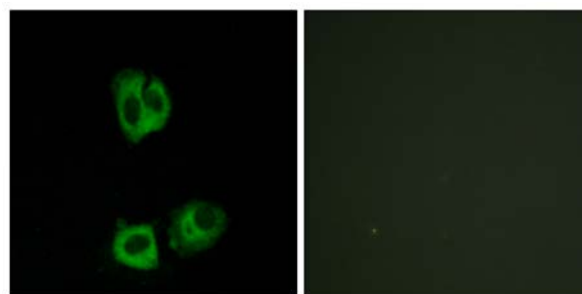
Koga Y., Eur. J. Immunol. 16:1643-1646(1986).

Perlmutter R.M., J. Cell. Biochem. 38:117-126(1988).

Rouer E., Gene 84:105-113(1989).



Western blot analysis of extracts from Jurkat cells, using Lck (Phospho-Tyr393) antibody.



Immunofluorescence analysis of HeLa cells, using Lck (Phospho-Tyr393) antibody.

For Research Use Only